



JUI60

## B&C ID.601

Light Weight Windbreaker with thermo lining

B&C  
COLLECTION

### Composition

Outer layer: 100% polyester 210T taffeta  
Body lining: 100% polyester tricot  
Sleeves lining: 100% taffeta polyester

### Size

S, M, L, XL, 2XL, 3XL

### Packing

5 pcs/pack & 30 pcs/carton

### Details

The B&C ID.601 windbreaker combines contemporary style with great weather protection. Its polyester shell fabric is both windproof and showerproof and a tricot thermo lining adds extra warmth. Features include a concealed hood, front pockets with overlap and an inside wallet pocket, all designed to make it practical as well as urban. The open back makes it easy to decorate too.

For the perfect Duo, pair it with the B&C ID.601 /women.

- Full zip opening with zip pull
- Ergonomic hood concealed in collar with closing tabs
- Self fabric lining inside collar
- Forward seams on shoulders for better protection
- 2 front pockets with overlap
- 1 inner wallet pocket
- Elasticated cuffs
- Ergonomic side panels
- Adjustable bottom hem (with drawcord adjusters)
- Essential contemporary look

### Care instructions



All our products are tested and approved using all main print techniques.



DUO  
CONCEPT

Want the same style for everyone?

**Try the B&C ID.601 /women**

Colors

001  
WHITE

002  
BLACK

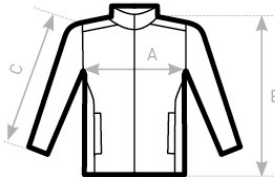
003  
NAVY

004  
RED

235  
ORANGE

670  
DARK GREY

Size Guide



<b>B&amp;C ID. 601</b> JUI60	XS	S	M	L	XL	XXL	XXXL
	-	54	57	60	63	66	69
	-	70	72	74	76	78	80
	-	63,5	65	66,5	68	69,5	71