

JWI61

B&C ID.601 /women

Light Weight Windbreaker with thermo lining

B&C
COLLECTION



Composition

Outer layer: 100% polyester 210T taffeta

Body lining: 100% polyester tricot

Sleeve lining: 100% taffeta polyester

Size

XS, S, M, L, XL, 2XL

Packing

5 pcs/pack & 30 pcs/carton

Details

The B&C ID.601 /women adds a feminine cut to this contemporary windbreaker. Its polyester shell fabric is both windproof and showerproof and a tricot thermo lining adds extra warmth. Features include a concealed hood and front pockets with overlap, designed to make it practical as well as urban. The open back makes it easy to decorate too.

For the perfect Duo, pair it with the B&C ID.601

- Full zip opening with zip pull
- Ergonomic hood concealed in collar with closing tabs
- Self fabric lining inside collar
- Forward seams on shoulders for better protection
- 2 front pockets with overlap
- Elasticated cuffs
- Ergonomic side panels
- Adjustable bottom hem (with drawcord adjusters)
- Essential contemporary look

Care instructions



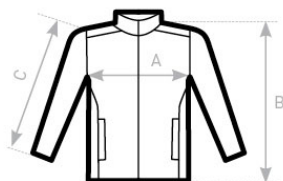
All our products are tested and approved using all main print techniques.



DUO
CONCEPT

Want the same style for everyone?

Try the B&C ID.601

Colors001
WHITE002
BLACK003
NAVY004
RED235
ORANGE670
DARK GREY**Size Guide**

B&C ID. 601 /WOMEN JW 161	XS	S	M	L	XL	XXL
A HALF CHEST	46	49	52	55	58	61
B BODY LENGTH AT CB	63	65	67	69	71	73
C SLEEVE LENGTH	65	66,5	67,5	69	70	71,5