



KUSTOM KIT®

2018



WELCOME TO
KUSTOM KIT®
2018

Kustom Kit's continued devotion to evolving our family of brands has once again resulted in a huge range of inspirational styles, designed with your logo in mind.

Influenced by the latest retail trends, our designers have developed 17 contemporary new styles that embrace the Kustom Kit philosophy of providing exceptional quality, performance and value.

We're dedicated to helping you achieve maximum impact for your brand and through the boundless diversity of our collections, we continue to provide a stunning range of styles, colours and sizes to clothe your entire team!



KUSTOM KIT®

CORPORATE COLLECTION

Exceptionally fine shirting and knitwear.

Pages 4 - 83



Includes our new Clayton & Ford shirt range.



KUSTOM KIT®

CLASSIC COLLECTION

Our classic collection is full of timeless styles that look right in almost any application.

Pages 84 - 123



KUSTOM KIT®

WORKWEAR

Workwear that's stylish and comfortable but also extremely durable.

Pages 124 - 133



KUSTOM KIT®
bargear

HOSPITALITY WEAR

Stylish and practical uniforms for the hospitality sector.

Pages 134 - 155



GAMEGEAR®

SPORTS & FITNESS APPAREL

Setting the benchmark for performance teamwear.

Pages 156 - 201



GAMEGEAR®
FORMULA RACING

MOTORSPORT TEAMWEAR

Distinctive teamwear inspired by motorsport.

Pages 202 - 209



KUSTOM KIT®

TECHNICAL INFORMATION

A useful guide to garment care, sizing, colours and much more.

Pages 210 - 217

KUSTOM KIT®

Corporate Collection

Exceptionally fine shirting and knitwear

KK141 Men's Poplin Shirt short sleeve	8-9	KK102 Men's Business Shirt short sleeve	44-45
KK241 Women's Poplin Shirt short sleeve	8-9	KK742F Women's Business Shirt short sleeve	44-45
KK142 Men's Poplin Shirt long sleeve	10-11	KK104 Men's Business Shirt long sleeve	46-47
KK242 Women's Poplin Shirt long sleeve	10-11	KK743F Women's Business Shirt long sleeve	46-47
KK136 Clayton & Ford Gingham Shirt	13	KK191 Slim Fit Business Shirt short sleeve	48-49
KK138 Clayton & Ford Micro Check Shirt	14	KK192 Slim Fit Business Shirt long sleeve	48-49
KK145 Clayton & Ford Contrast Shirt	15	KK385 Men's City Business Shirt short sleeve	50-51
KK190 Men's Contrast Premium Oxford Shirt	16-17	KK387 Women's City Business Shirt short sleeve	50-51
KK790 Women's Contrast Premium Oxford Shirt	16-17	KK386 Men's City Business Shirt long sleeve	52-53
KK189 Men's Contrast Premium Oxford Shirt	18-19	KK388 Women's City Business Shirt long sleeve	52-53
KK789 Women's Contrast Premium Oxford Shirt	18-19	KK133 Pilot Shirt short sleeve	54-55
KK187 Tailored Fit Premium Oxford Shirt short sleeve	20-21	KK134 Pilot Shirt long sleeve	54-55
KK188 Tailored Fit Premium Oxford Shirt long sleeve	20-21	KK100 Men's Workforce Shirt short sleeve	56-57
KK117 Executive Premium Oxford Shirt short sleeve	22-23	KK728 Women's Workforce Shirt short sleeve	56-57
KK118 Executive Premium Oxford Shirt long sleeve	22-23	KK140 Men's Workforce Shirt long sleeve	58-59
KK109 Men's Corporate Oxford Shirt short sleeve	24-25	KK729 Women's Workforce Shirt long sleeve	58-59
KK701 Women's Corporate Oxford Shirt short sleeve	24-25	KK160 Men's Mandarin Collar Shirt short sleeve	60-61
KK105 Men's Corporate Oxford Shirt long sleeve	26-27	KK260 Women's Mandarin Collar Shirt short sleeve	60-61
KK702 Women's Corporate Oxford Shirt long sleeve	26-27	KK161 Men's Mandarin Collar Shirt long sleeve	62-63
KK710 Women's Corporate Oxford Shirt 3/4 sleeve	28	KK261 Women's Mandarin Collar Shirt long sleeve	62-63
KK719 Women's Corporate Oxford Shirt with pocket	29	KK713 Pinstripe Shirt	64
KK350 Men's Workwear Oxford Shirt short sleeve	30-31	KK747 Contemporary Business Shirt	65
KK360 Women's Workwear Oxford Shirt short sleeve	30-31	KK755 Keyhole Neck Corporate Top	66
KK351 Men's Workwear Oxford Shirt long sleeve	32-33	KK770 V Neck Mandarin Collar Corporate Top	67
KK361 Women's Workwear Oxford Shirt long sleeve	32-33	KK715 Continental Blouse 3/4 sleeve	68
KK183 Slim Fit Workwear Oxford Shirt short sleeve	34-35	KK727 Continental Blouse Mandarin Collar cap sleeve	69
KK184 Slim Fit Workwear Oxford Shirt long sleeve	34-35	KK352 Men's Arundel Sweater	72-73
KK113 Slim Fit Premium Oxford Shirt	36	KK353 Women's Arundel Sweater	72-73
KK139 Slim Fit Non Iron Oxford Twill Shirt	37	KK252 Merino Blend Sweater	74-75
KK115 Men's Premium Non Iron Corporate Shirt short sleeve	38-39	KK357 Heavyweight Arundel Sweater	76
KK315 Women's Premium Non Iron Corporate Shirt short sleeve	38-39	KK358 Contrast Arundel Sweater	77
KK116 Men's Premium Non Iron Corporate Shirt long sleeve	40-41	KK356 Arundel Knitted Polo Sweater	78-79
KK316 Women's Premium Non Iron Corporate Shirt long sleeve	40-41	KK354 Arundel V Neck Cardigan	80
KK114 Premium Non Iron Slim Fit Shirt	42	KK355 Arundel Crew Neck Cardigan	81
KK131 Tailored Fit Business Shirt	43	KK359 Long Line V Neck Cardigan	82-83

POPLIN SHIRT COLLECTION

Our new Poplin shirt collection is available in four styles comprising of coordinating long and short sleeve styles for men and women. Offering a modern tailored fit, these 65/35 polyester cotton shirts are available in 10 core colours and a wide range of sizes. These incredibly versatile shirts represent outstanding value for money.



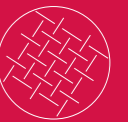
Modern tailored fit



Long & short sleeve options for him & her



Easy iron



65/35 polyester cotton fabric



Men's sizes 14.5 - 23' collar
Women's sizes 6 - 28



Outstanding value



White



Light Grey



Light Blue



Royal



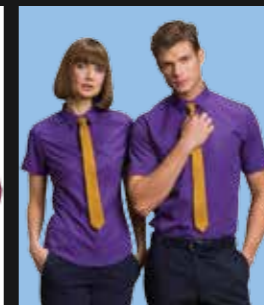
Dark Navy



Red



Claret



Purple



Graphite



Black

KK141 Men's KK241 Women's

Poplin Shirt

Short Sleeve

NEW



SIZES

KK141
14.5 - 23" collar

KK241

6 - 28
see page 211 for full size spec
and European sizing.

FABRIC

65/35 polyester/cotton poplin

WEIGHT

105gsm

FEATURES



Fused semi cutaway collar. Rounded hem. Spare button. Front and back darts (KK241 only).

ACCREDITATIONS



Factory is audited annually by BSCI

COLOURS



white light grey graphite



light blue royal dark navy



red claret purple



black



KK142 Men's KK242 Women's

Poplin Shirt NEW

Long Sleeve



SIZES

KK142
14.5 - 23" collar

KK242

6 - 28

see page 211 for full size spec and European sizing.

FABRIC

65/35 polyester/cotton poplin

WEIGHT

105gsm

FEATURES



Fused semi cutaway collar. Rounded hem. Adjustable two button cuff with pointed no button cuff placket. Option for cufflinks (KK142). Chest pocket (KK142). Spare button.

ACCREDITATIONS



Factory is audited annually by BSCI

COLOURS



white light grey graphite



light blue royal dark navy



red claret purple



black



CLAYTON & FORD

BY
KUSTOM KIT

A thoroughly modern
collection of premium shirting with
a business casual aesthetic



CLAYTON
& FORD
BY
KUSTOM KIT

KK136

Gingham Shirt

NEW



SIZES

14.5 - 19" collar
see page 211 for full size spec
and European sizing.

FABRIC

100% cotton twill
(contrast 65% polyester 35% cotton)

WEIGHT

125gsm
(contrast 105gsm)

FEATURES



Fused stand up button down collar.
Rounded hem. Contrast back yoke.
Inner cuff button stand and cuff
placket button stand. Contrast insert
side vents. Spare buttons. Adjustable
2 button cuff with 1 button placket.

ACCREDITATIONS

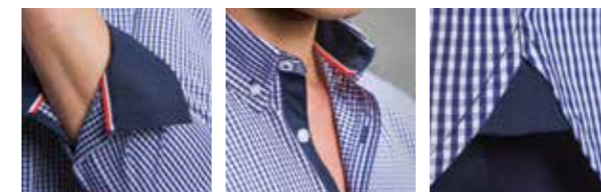


Factory is audited annually by BSCI

COLOURS



navy
white



KK138

NEW

Micro Check Shirt



SIZES

14.5 - 19" collar
see page 211 for full size spec
and European sizing.

FABRIC

100% cotton poplin
(contrast 65% polyester 35% cotton)

WEIGHT

125gsm (contrast 105gsm)

WEIGHT

125gsm

FEATURES



Fused stand up button down collar.
Rounded hem. Contrast back yoke.
Inner cuff button stand and cuff
placket button stand. Contrast insert
side vents. Spare buttons. Adjustable
2 button cuff with 1 button placket.

ACCREDITATIONS



Factory is audited annually by BSCI



COLOURS



light blue
white



KK145

NEW

Contrast Shirt



SIZES

14.5 - 19" collar
see page 211 for full size spec
and European sizing.

FABRIC

100% cotton oxford
(contrast 65% polyester 35% cotton)

WEIGHT

125gsm (contrast 105gsm)

WEIGHT

150gsm

FEATURES



Fused stand up button down collar.
Rounded hem. Contrast back yoke.
Inner cuff button stand and cuff
placket button stand. Contrast insert
side vents. Spare buttons. Adjustable
2 button cuff with 1 button placket.

ACCREDITATIONS



Factory is audited annually by BSCI



COLOURS



white
light blue
light blue
navy



KK190 Men's KK790 Women's

Contrast Premium Oxford Shirt



SIZES
KK190
S - 2XL

KK790
8 - 18

see page 211 for full size spec
and European sizing.

FABRIC

85/15 mercerised cotton/polyester

WEIGHT

125gsm

FEATURES



Fused stand up collar. Contrast inner collar stand, inner cuff and cuff placket. Contrast binding down centre button placket. Rounded hem. Spare buttons.

KK190 - One button adjustable cuff with cufflink option. Buttoned cuff placket. Button down collar.

KK790 - Darts to front and back. One button adjustable cuff with pleated cuff placket detail. Regular collar.

ACCREDITATIONS



Factory is audited annually by BSCI

COLOURS



white mid blue white charcoal* white navy



navy light blue* black silver grey

*KK190 only



KK189 Men's KK789 Women's

Contrast Premium Oxford Shirt



SIZES

KK189
S - 2XL

KK789
8 - 18

see page 211 for full size spec
and European sizing.

COLOURS



light blue
navy

silver grey
charcoal

FABRIC

85/15 mercerised cotton/polyester

WEIGHT

125gsm

FEATURES



Regular fused stand up collar.
Contrast inner collar stand, inner
cuff and cuff placket. Rounded hem.
Spare button.

KK189 - One button adjustable cuff
with cufflink option. Buttoned cuff
placket.

KK789 - Princess seaming to front
and back. Two button cuff.

ACCREDITATIONS



Factory is audited annually by BSCI



KK187 Short Sleeve KK188 Long Sleeve

Tailored Fit Premium Oxford Shirt



SIZES

14.5 - 19.5" collar
see page 211 for full size spec
and European sizing.

FABRIC

85/15 mercerised cotton/polyester

WEIGHT

125gsm

FEATURES



Fused stand up collar. Button down collar. Rounded hem. Spare buttons. Two button cuff (KK188 only).

ACCREDITATIONS



Factory is audited annually by BSCI

COLOURS



white

light blue



dark purple

black



KK117 Short Sleeve KK118 Long Sleeve

Executive Premium Oxford Shirt



SIZES

15 - 18.5" collar
see page 211 for full size spec
and European sizing.

FABRIC

85/15 mercerised cotton/polyester

WEIGHT

125gsm

FEATURES



Fused stand up, semi-cutaway collar. Removable collar bones. Optional chest pocket. Two pleats at back. Rounded hem. Two button cuff (KK118 only). Spare button.

ACCREDITATIONS



Factory is audited annually by BSCI

COLOURS



white

light blue



black



KK109 Men's KK701 Women's

Corporate Oxford Shirt Short Sleeve



SIZES

KK109

14 - 23" collar
14" available in white and light blue only,
all other colours available to order.

KK701

6 - 28
6 available in black, white and light blue
and to order in all other colours.
see page 211 for full size spec
and European sizing.

FABRIC

85/15 mercerised cotton/polyester

WEIGHT

125gsm

FEATURES



KK109 KK701

Button down, fused stand up collar.
Rounded hem. Spare buttons.

KK109 - Chest pocket. Centre back
pleat.

KK701 - Darts to front and back.

ACCREDITATIONS



Factory is audited annually by BSCI

COLOURS



white silver grey charcoal black



light blue mid blue* royal midnight navy



lilac red burgundy* dark purple**



bottle green*

*KK109 only

**KK701 only



KK105 Men's KK702 Women's

Corporate Oxford Shirt Long Sleeve



SIZES
KK105

14 - 23" collar
14" available in white and light blue only, all other colours available to order.

KK702
6 - 28

6 available in black, white and light blue only, all other colours available to order. see page 211 for full size spec and European sizing.

FABRIC

85/15 mercerised cotton/polyester

WEIGHT

125gsm

FEATURES
KK105



Button down, fused stand up collar. Centre back pleat. Rounded hem. Chest pocket. Buttoned cuff placket. One button adjustable cuff with cufflink option. Spare buttons.

KK702



Regular fused stand up collar. Rounded hem. Princess seaming to front and back. Three button cuff. Spare buttons.

ACCREDITATIONS



Factory is audited annually by BSCI

COLOURS



*KK105 only
**KK702 only



KK710

Women's Corporate Oxford Shirt 3/4 Sleeve



SIZES

8 - 20
see page 211 for full size spec
and European sizing.

FABRIC

85/15 mercerised cotton/polyester

WEIGHT

125gsm

FEATURES



Soft fused collar. Open neck line.
Rounded hem. Two darts to front
and back. 3/4 sleeve with turned
back cuff detail. Spare button.

ACCREDITATIONS



Factory is audited annually by BSCI

COLOURS



KK719

Women's Corporate Oxford Shirt With Pocket



SIZES

8 - 20
see page 211 for full size spec
and European sizing.

FABRIC

85/15 mercerised cotton/polyester

WEIGHT

125gsm

FEATURES



Regular fused stand up collar.
Rounded hem. Two darts to front
and back. Spare button.

ACCREDITATIONS



Factory is audited annually by BSCI

COLOURS



KK350 Men's KK360 Women's

Workwear Oxford Shirt Short Sleeve



SIZES

KK350

14.5 - 23" collar

KK360

6 - 28

6 available in white and light blue only, all other colours available to order. see page 211 for full size spec and European sizing.

FABRIC

70/30 mercerised cotton/polyester

WEIGHT

135gsm

FEATURES



KK350 KK360

Fused stand up collar. Rounded hem. Spare buttons.

KK350 - Button down collar.

Chest pocket. Two pleats at back.

KK360 - Regular collar. Two darts to front and back.

ACCREDITATIONS



Factory is audited annually by BSCI

COLOURS



white

pink*

red



light blue

Italian blue

French navy



black

*KK360 only



KK351 Men's KK361 Women's

Workwear Oxford Shirt Long Sleeve



SIZES

KK351
14.5 - 23" collar

KK361
6 - 28

6 available in white and light blue only, all other colours available to order. see page 211 for full size spec and European sizing.

FABRIC

70/30 mercerised cotton/polyester

WEIGHT

135gsm

FEATURES



KK351 KK361

Fused stand up collar. Rounded hem. Spare buttons.

KK350 - Button down collar. Buttoned cuff placket. Chest pocket. Two pleats at back. One button adjustable cuff.

KK360 - Regular collar. Two darts to front and back. Two button cuff.

ACCREDITATIONS



Factory is audited annually by BSCI

COLOURS



white

red



light blue

French navy



black



KK183 Short Sleeve KK184 Long Sleeve

Slim Fit Workwear Oxford Shirt



SIZES

14 - 18" collar
see page 211 for full size spec
and European sizing.

FABRIC

70/30 mercerised cotton/polyester

WEIGHT

135gsm

FEATURES



Fused stand up collar. Button down collar. Buttoned cuff placket. Chest pocket. Rounded hem. Darted back panel. Two button cuff (KK184 only). Spare buttons.

ACCREDITATIONS



Factory is audited annually by BSCI

COLOURS



white

light blue



navy*

black*

*KK184 only

NEW



KK113

Slim Fit Premium Oxford Shirt



SIZES

14 - 18" collar
see page 211 for full size spec
and European sizing.

FABRIC

85/15 mercerised cotton/polyester

WEIGHT

125gsm

FEATURES



Stand up button down collar. Rounded hem. Back yoke. Two darts at back panel. Notched cuff. Buttoned cuff placket. Chest pocket. Spare buttons.

ACCREDITATIONS



Factory is audited annually by BSCI

COLOURS



white light blue



black



KK139

Slim Fit Non Iron Oxford Twill Shirt



SIZES

14 - 18" collar
see page 211 for full size spec
and European sizing.

FABRIC

100% cotton twill

WEIGHT

130gsm

FEATURES



Stand up button down collar. Rounded hem. Back yoke. Two darts at back panel. Notched cuff. Buttoned cuff placket. Spare buttons.

ACCREDITATIONS



Factory is audited annually by BSCI

COLOURS



white light blue



KK115 Men's KK315 Women's

Premium Non Iron Corporate Shirt Short Sleeve



SIZES

KK115

14.5 - 18.5" collar

KK315

8 - 20

see page 211 for full size spec
and European sizing.

FABRIC

100% mercerised cotton poplin

WEIGHT

125gsm

FEATURES



Fused stand up collar. Rounded
hem. Wrinkle free taping to seams.

Spare button.

KK115 - Semi-cutaway collar.

Chest pocket.

KK315 - Regular collar.

V insert in side seams at hem.

ACCREDITATIONS



Factory is audited annually by BSCI

COLOURS



white

light blue



black



KK116 Men's KK316 Women's

Premium Non Iron Corporate Shirt Long Sleeve



SIZES

KK116

14.5 - 18.5" collar

KK316

8 - 20

see page 211 for full size spec
and European sizing.

FABRIC

100% mercerised cotton poplin

WEIGHT

125gsm

FEATURES



Fused stand up collar. Rounded hem. Wrinkle free taping to seams. Spare button.

KK116 - Semi-cutaway collar. Chest pocket. Two pleats at back. Two button cuff.

KK316 - Regular collar. V insert in side seams at hem. One button cuff with pleated placket detail.

ACCREDITATIONS



Factory is audited annually by BSCI

COLOURS



white

light blue



black



KK114

Slim Fit Premium Non Iron Shirt



SIZES

14 - 18" collar
see page 211 for full size spec
and European sizing.

FABRIC

100% mercerised cotton poplin

WEIGHT

125gsm

FEATURES



Fused stand up collar. Darted back panel. Wrinkle free taping to seams. Rounded hem. Two button cuff. Buttoned cuff placket. Spare button.

ACCREDITATIONS



Factory is audited annually by BSCI

COLOURS



white

light blue

KK131

Tailored Fit Business Shirt



SIZES

14.5 - 18.5" collar
see page 211 for full size spec
and European sizing.

FABRIC

55/45 mercerised cotton/polyester poplin

WEIGHT

105gsm

FEATURES



Fused stand up, semi-cutaway collar with removable collar bones. Rounded hem. Two button cuff. Spare button.

ACCREDITATIONS



Factory is audited annually by BSCI

COLOURS



white

light blue



black

KK102 Men's KK742F Women's

Business Shirt

Short Sleeve



SIZES

KK102

14.5 - 21" collar

KK742F

6 - 28

6 available in black, white and light blue only and to order in all other colours. see page 211 for full size spec and European sizing.

FABRIC

55/45 mercerised cotton/polyester poplin

WEIGHT

105gsm

FEATURES



KK102 KK742F

Regular fused stand up collar. Rounded hem. Spare buttons.

KK102 - Chest pocket.

KK742F - Princess seaming to front and back.

ACCREDITATIONS



Factory is audited annually by BSCI

COLOURS



white

silver grey



light blue

dark navy



black



KK104 Men's KK743F Women's

Business Shirt

Long Sleeve



SIZES

KK104

14.5 - 21" collar

KK743F

6 - 28

6 available in black, white and light blue only and to order in all other colours. see page 211 for full size spec and European sizing.

FABRIC

55/45 mercerised cotton/polyester poplin

WEIGHT

105gsm

FEATURES



KK104 KK743F

Regular fused stand up collar. Rounded hem. Spare buttons.

KK104 - Chest pocket.

KK743F - Princess seaming to front and back.

ACCREDITATIONS



Factory is audited annually by BSCI

COLOURS



white

silver grey



light blue

dark navy



black



KK191 Short Sleeve KK192 Long Sleeve

Slim Fit Business Shirt



SIZES

14 - 18" collar
see page 211 for full size spec
and European sizing.

FABRIC

55/45 mercerised cotton/polyester poplin

WEIGHT

105gsm

FEATURES



Regular fused stand up collar. Rounded hem. Two back darts. Spare button. Two button cuff placket (KK192 only).

ACCREDITATIONS



Factory is audited annually by BSCI

COLOURS



white

light blue



black



KK385 Men's KK387 Women's

City Business Shirt

Short Sleeve



SIZES

KK385

14.5 - 19.5" collar

KK387

8 - 20

see page 211 for full size spec
and European sizing.

COLOURS



white

light blue



black

FABRIC

100% cotton

WEIGHT

120/125gsm

FEATURES



Fused stand up collar. Rounded hem. Spare button.

KK385 - Button down collar.

KK387 - Regular collar. Princess seaming to front and back.

ACCREDITATIONS



Factory is audited annually by BSCI



KK386 Men's KK388 Women's

City Business Shirt

Long Sleeve



SIZES

KK386

14.5 - 19.5" collar

KK388

8 - 20

see page 211 for full size spec
and European sizing.

FABRIC

100% cotton

WEIGHT

120/125gsm

FEATURES



Fused stand up collar. Rounded hem. Spare button. Two button cuff.

KK386 - Button down collar.

KK388 - Regular collar. Princess seaming to front and back.

ACCREDITATIONS



Factory is audited annually by BSCI

COLOURS



white

light blue



black



KK133 Short Sleeve KK134 Long Sleeve

Pilot Shirt



SIZES

14.5 - 19.5" collar
see page 211 for full size spec
and European sizing.

COLOURS



FABRIC

55/45 mercerised cotton/polyester poplin

WEIGHT

105gsm

FEATURES



Regular fused stand up collar. Two chest pockets with button down flaps. Pen holder to left pocket. Button down epaulettes on shoulders. Straight hem. Spare buttons. One button cuff placket (KK134 only).

ACCREDITATIONS



Factory is audited annually by BSCI



KK100 Men's KK728 Women's

Workforce Shirt

Short Sleeve



SIZES

KK100
S - 3XL

KK728

8 - 28

see page 211 for full size spec
and European sizing.

FABRIC

65/35 polyester/cotton poplin

WEIGHT

115gsm

FEATURES



Fused stand up collar. Rounded hem. Optional chest pocket. Spare buttons.

KK100 - Button down collar. Two pleats to back.

KK728 - Regular collar. Darts front and back.

ACCREDITATIONS



Factory is audited annually by BSCI

COLOURS



white

lime



black



KK140 Men's KK729 Women's

Workforce Shirt

Long Sleeve



SIZES

KK140
S - 3XL

KK729

8 - 28

see page 211 for full size spec
and European sizing.

FABRIC

65/35 polyester/cotton poplin

WEIGHT

115gsm

FEATURES



Fused stand up collar. Rounded hem. Optional chest pocket. One button adjustable cuff. Spare buttons.

KK140 - Button down collar. Two pleats to back.

KK729 - Regular collar. Darts front and back.

ACCREDITATIONS



Factory is audited annually by BSCI

COLOURS



white

lime



black



KK160 Men's KK260 Women's

Mandarin Collar Shirt

Short Sleeve



SIZES

KK160
S - 2XL

KK260

8 - 18

see page 211 for full size spec
and European sizing.

COLOURS



white

black

FABRIC

65/35 polyester/cotton poplin

WEIGHT

115gsm

FEATURES



Soft fused mandarin collar.

Concealed front placket.

Rounded hem. Spare button.

KK160 - Two pleats at back.

KK260 - Two darts front and back.

Side vents.

ACCREDITATIONS



Factory is audited annually by BSCI



KK161 Men's KK261 Women's

Mandarin Collar Shirt

Long Sleeve



SIZES

KK161
S - 2XL

KK261
8 - 18

see page 211 for full size spec
and European sizing.

COLOURS



white

black

FABRIC

65/35 polyester/cotton poplin

WEIGHT

115gsm

FEATURES



Soft fused mandarin collar.
Concealed front placket.
Rounded hem. Spare button. One
button adjustable cuff.

KK161 - Two pleats at back.

Buttoned cuff placket.

KK261 - Two darts front and back.

Side vents.

ACCREDITATIONS



Factory is audited annually by BSCI



KK713

Women's Pinstripe Shirt



SIZES

8 - 22
see page 211 for full size spec
and European sizing.

FABRIC

55/45 mercerised cotton/polyester poplin

WEIGHT

100gsm

FEATURES



Soft fused open collar. Micro striped
fabric. Darts front and back. Rounded hem.
Spare button.

ACCREDITATIONS



Factory is audited annually by BSCI

COLOURS



light blue
white



KK747

Women's Contemporary Business Shirt



SIZES

8 - 20
see page 211 for full size spec
and European sizing.

FABRIC

55/45 mercerised cotton/polyester

WEIGHT

105gsm

FEATURES



Regular fused stand up collar.
Concealed non gape placket. Two
bust darts and princess back seams.
Adjustable one button cuff with
pleated detail. Rounded hem. Spare
button.

ACCREDITATIONS



Factory is audited annually by BSCI

COLOURS



white light blue



black



KK755

Keyhole Neck Corporate Top



SIZES
8/10 - 20/22
see page 211 for full size spec
and European sizing.

FABRIC
95/5 cotton/elastane

WEIGHT
200gsm

FEATURES



Keyhole mandarin neck. Elastane fabric for enhanced fit. Shaped side seams. Straight hem.

ACCREDITATIONS



Factory is audited annually by BSCI

COLOURS



KK770

V Neck Mandarin Collar Corporate Top



SIZES
8/10 - 20/22
see page 211 for full size spec
and European sizing.

FABRIC
95/5 cotton/elastane

WEIGHT
200gsm

FEATURES



V neck mandarin neck. Elastane fabric for enhanced fit. Shaped side seams. Straight hem.

ACCREDITATIONS



Factory is audited annually by BSCI

COLOURS



KK715

3/4 Sleeve Continental Blouse



SIZES

8 - 22
see page 211 for full size spec
and European sizing.

FABRIC

65/35 polyester/cotton poplin

WEIGHT

115gsm

FEATURES



Regular fused stand up collar.
Open V neck. 3/4 length sleeves
with rounded vented cuff. Concealed
placket. Bust darts. Two back darts.
Rounded hem with side vents. Spare
button.

ACCREDITATIONS



Factory is audited annually by BSCI

COLOURS



white

black



KK727

Mandarin Collar Cap Sleeve Continental Blouse



SIZES

8 - 20
see page 211 for full size spec
and European sizing.

FABRIC

65/35 polyester/cotton poplin

WEIGHT

115gsm

FEATURES



Soft fused open mandarin collar. Self
fabric button loops to placket. Inner
modesty placket. Two darts front
and back. Cap sleeves. Rounded
hem. Spare button.

ACCREDITATIONS



Factory is audited annually by BSCI

COLOURS



white

black





Knitwear

Our contemporary knitwear collection brings the option of layering to your corporate wardrobe. Offering exceptional comfort and performance, the classic, versatile styling can be dressed up or down to suit the occasion.

Having your company logo embroidered onto our sweaters and cardigans is a sleek and stylish way to promote your business.

KK352 Men's KK353 Women's

Arundel Sweater



SIZES

KK352
XXS - 3XL

KK353

6 - 20
see page 211 for full size spec
and European sizing.

FABRIC

50/50 cotton/acrylic
95/5 cotton/viscose (silver grey)

WEIGHT

12 gauge

FEATURES

Tubular linked mitred V neck. 1 x 1
rib cuffs and welt. Fully fashioned
armholes and sleeve head.

ACCREDITATIONS



Factory is audited annually by BSCI

COLOURS



silver grey* graphite*



bottle green* burgundy*



navy black

*KK352 only



KK252

Merino Blend Sweater



SIZES

XS - 2XL
see page 211 for full size spec
and European sizing.

FABRIC

50/50 Merino wool/acrylic

WEIGHT

12 gauge

FEATURES

Luxury Italian Merino blend
yarn. Fashioned back shoulder.
Fashioning details to neck,
armhole and sleeve head. Tubular
linked mitred V neck. 1 x 1 ribbed
cuff and welt.

ACCREDITATIONS



COLOURS



dark grey
melange

navy



black



KK357

Heavyweight Arundel Sweater



SIZES

XS - 3XL
see page 211 for full size spec
and European sizing.

FABRIC

50/50 cotton/acrylic

WEIGHT

7 gauge

FEATURES

1 x 1 sandwich linked neck trim. 2
x 2 rib cuffs and welt. Fashioned V
neck. Fully fashioned armholes and
sleeve head.

ACCREDITATIONS



Factory is audited annually by BSCI

COLOURS



navy

black

KK358

Contrast Arundel Sweater



SIZES

XS - 2XL
see page 211 for full size spec
and European sizing.

FABRIC

50/50 cotton/acrylic

WEIGHT

12 gauge

FEATURES

Tubular linked mitred neck trim.
1 x 1 rib cuffs and welt. Contrast
coloured tipping to neck trim.
Fashioned V neck. Fully fashioned
armholes and sleeve head.

ACCREDITATIONS



Factory is audited annually by BSCI

COLOURS



navy
silver grey

black
silver grey



KK356

Arundel Knitted Polo Sweater



SIZES

S - 2XL
see page 211 for full size spec
and European sizing.

FABRIC

50/50 cotton/acrylic

WEIGHT

12 gauge

FEATURES

1 x 1 rib flat knit linked collar.
1 x 1 rib cuffs and welt. Three
button placket. Reinforced
shoulder seams. Fully fashioned
armholes and sleeve head.

ACCREDITATIONS



Factory is audited annually by BSCI

COLOURS



navy

black



KK354

Arundel V Neck Cardigan



SIZES

6 - 20
see page 211 for full size spec
and European sizing.

FABRIC

50/50 cotton/acrylic

WEIGHT

12 gauge

FEATURES

Tubular linked neck and stole. 1 x 1
rib cuff and welt. Placket and button
detail to cuff. Fully fashioned arm
holes and sleeve head. Spare button.

ACCREDITATIONS



Factory is audited annually by BSCI

COLOURS



navy

black

KK355

Arundel Crew Neck Cardigan



SIZES

6 - 20
see page 211 for full size spec
and European sizing.

FABRIC

50/50 cotton/acrylic

WEIGHT

12 gauge

FEATURES

Tubular linked neck and stole. 1 x 1
rib cuff and welt. Placket and button
detail to cuff. Fully fashioned arm
holes and sleeve head. Spare button.

ACCREDITATIONS



Factory is audited annually by BSCI

COLOURS



navy

black



KK359

Long Line V Neck Cardigan



SIZES

8 - 20
see page 211 for full size spec
and European sizing.

FABRIC

70/30 viscose/nylon

WEIGHT

12 gauge

FEATURES

Single linked strapping to stole
and neck. 1 x 1 ribbed cuff.
Tubular welt and pocket tops.
Fashioned detail to neck,
armhole and sleeve head. Stretch
yarn. Spare button.

ACCREDITATIONS



Factory is audited annually by BSCI

COLOURS



navy

black



KUSTOM KIT®

Classic Collection

Our classic collection is full of timeless styles
that look right in almost any application.

KK413 Men's Slim Fit Klassic Polo	86-87
KK213 Women's Slim Fit Klassic Polo	86-87
KK403 Men's Klassic Polo	90-91
KK703 Women's Klassic Polo	90-91
KK406 Kids Klassic Polo	92
KK404 Contrast Collar & Placket Polo	93
KK409 Tipped Collar Polo	94-95
KK449 Button Down Collar Contrast Polo	96
KK603 Slim Fit Team Style Polo	97
KK402 Jersey Knit Polo	98
KK405 Augusta Premium Polo	99
KK475 Track Polo	100-101
KK606 Men's St. Mellion Polo	102-103
KK706 Women's St. Mellion Polo	102-103
KK448 Men's Essential Polo	104-105
KK748 Women's Essential Polo	104-105
KK415 Contrast Tipped Fashion Fit Polo	106
KK615 Oak Hill Polo	107
KK617 Scottsdale Polo	108
KK619 Slim Fit Club Style Polo	109
KK705 Kate Comfortec® Polo	110
KK732 Sophia V Neck Comfortec® Polo	111
KK430 Men's Long Sleeve Polo	112
KK500 Men's Hunky® Superior Tee	113
KK504 Men's Fashion Fit Tee	114-115
KK754 Women's Fashion Fit Tee	114-115
KK302 Klassic Sweatshirt	116
KK933 Slim Fit Sweat Pant	117
KK303 Klassic Hooded Zipped Jacket	118
KK306 Knitted Fleece	119
KK954 Men's Corporate Soft Shell Jacket	120-121
KK934 Women's Corporate Soft Shell Jacket	120-121
KK903 Men's Grizzly Fleece	122-123
KK904 Women's Grizzly Fleece	122-123

KK413 Men's KK213 Women's

Slim Fit Klassic Polo



SIZES

KK413
XXS - 2XL

KK213

6 - 16

see page 211 for full size spec
and European sizing.

FABRIC

65/35 polyester/cotton pique

WEIGHT

185gsm

FEATURES



1 x 1 rib flat knit collar and cuffs. Taped back neck. Narrow three button slanted top placket. Taped shoulder seams. Side vents. Tear out back neck label. Spare button.

Please note: Superwash 60°C wash can only be guaranteed on non decorated garments.

ACCREDITATIONS



Factory is audited annually by BSCI

COLOURS



*KK413 only
**KK213 only



LIVE LIFE IN COLOUR

KUSTOM KIT®

KK403 Klassic Polo

Our Klassic polo is renowned for its superior quality and 60° wash easy care fabric.

Available in 28 stunning colours and sizes up to 6XL, we also offer the Klassic with slim fit and co-ordinating women's & kids options.

A true klassic!



natural

light blue

mid blue

turquoise

jade

royal blue



mint green

canary

lime

apple green

kelly green

bottle green



pink

burnt orange

red

raspberry

magenta

burgundy



purple

dark purple

denim marl

navy blue

chocolate



white

heather grey

charcoal

graphite

black

KK403 Men's KK703 Women's

Klassic Polo



SIZES

KK403

XS - 6XL

Up to 5XL in white, red, turquoise, lime, graphite, bottle green, royal & charcoal only.

Up to 6XL in black and navy only. All other colours XS - 4XL

KK703

6 - 24

Up to 24 in black, turquoise, navy, & raspberry only.

All other colours 6 - 22 see page 211 for full size spec and European sizing.

FABRIC

65/35 polyester/cotton pique

WEIGHT

185gsm

FEATURES



1 x 1 flat knit collar and cuffs. Taped back neck. Three button placket with slanted top. Taped shoulder seams. Half moon yoke. Side vents. Spare button.

Please note: Superwash 60°C wash can only be guaranteed on non decorated garments.

ACCREDITATIONS



ACCORD
of the Global Business Alliance for Responsible Textile & Apparel

Factory is audited annually by BSCI

COLOURS



*KK403 only



KUSTOM KIT®

CLASSIC COLLECTION

KK406 Kids

Klassic Polo



SIZES

ages 3/4 - 13/14
see page 211 for full size spec
and European sizing.

FABRIC

65/35 polyester/cotton pique

WEIGHT

180gsm

FEATURES



1 x 1 flat knit collar and cuffs.
Taped back neck. Three button
placket with slanted top. Taped
shoulder seams. Half moon
yoke. Side vents. Spare button.

Please note: Superwash 60°C wash can
only be guaranteed on non decorated
garments.

ACCREDITATIONS



Factory is audited annually by BSCI

COLOURS



KUSTOM KIT®

CLASSIC COLLECTION

KK404

Contrast Collar & Placket Polo



SIZES

S - 2XL
see page 211 for full size spec
and European sizing.

FABRIC

65/35 polyester/cotton pique

WEIGHT

180/185gsm

FEATURES



1 x 1 rib flat knit collar and cuff.
Taped back neck. Three button
placket. Contrast colour to
neck, cuff and placket. Taped
shoulder seams. Side vents.
Spare button.

ACCREDITATIONS



Factory is audited annually by BSCI

COLOURS



KK409

Tipped Collar Polo



SIZES

S - 3XL
see page 211 for full size spec and European sizing.

FABRIC

65/35 polyester/cotton pique

WEIGHT

185gsm

FEATURES



1 x 1 rib flat knit collar and cuff. Taped back neck. Three button placket. Contrast tipping to collar and cuff. Taped shoulder seams. Half moon yoke. Side vents. Spare button.

ACCREDITATIONS



Factory is audited annually by BSCI

COLOURS



white navy red white graphite white



light blue navy turquoise white royal white



navy white navy yellow navy light blue



black white black yellow black orange



black red



KK449

Button Down Collar Contrast Polo



SIZES
S - 2XL
see page 211 for full size spec and European sizing.

FABRIC
65/35 polyester/cotton pique

WEIGHT
180/185gsm

FEATURES



Self fabric fused button down collar. Contrast inner collar stand, taped back neck and inner placket. 1 x 1 ribbed cuffs with contrast piping detail. Four button placket. Taped shoulder seams. Contrast taped side vents. Spare button.

ACCREDITATIONS



Factory is audited annually by BSCI

COLOURS



KK603

Slim Fit Team Style Polo



SIZES
XS - 2XL
see page 211 for full size spec and European sizing.

FABRIC
100% combed cotton pique

WEIGHT
210gsm

FEATURES



1 x 1 rib flat knit collar and cuffs. Narrow three button curved top placket. Striped woven tape applied to shoulders and side seams. Spare button.

ACCREDITATIONS



Factory is audited annually by BSCI

COLOURS



KK402

Jersey Knit Polo



SIZES
S - 2XL
see page 211 for full size spec
and European sizing.

FABRIC
100% combed cotton single jersey

WEIGHT
210gsm

FEATURES



1 x 1 rib flat knit collar with open sleeves. Taped back neck. Three button slanted top placket. Taped shoulder seams. Half moon yoke. Side vents. Spare button.

ACCREDITATIONS



Factory is audited annually by BSCI

COLOURS



KK405

Augusta Premium Polo



SIZES
S - 4XL
see page 211 for full size spec
and European sizing.

FABRIC
100% combed cotton pique

WEIGHT
210gsm

FEATURES



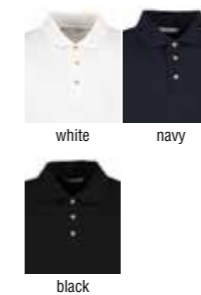
1 x 1 rib flat knit collar and cuff. Taped back neck. Three button slanted top placket with horn effect buttons. Taped shoulder seams. Half moon yoke. Drop tail hem with side vents. Spare button.

ACCREDITATIONS



Factory is audited annually by BSCI

COLOURS



KK475

Track Polo



SIZES

XXS - 3XL

XXS & XS in black gold, black orange, black red, black grey, black royal, black lime & navy light blue only.

see page 211 for full size spec and European sizing.

FABRIC

65/35 polyester/cotton pique

WEIGHT

200gsm

FEATURES



1 x 1 rib flat knit collar.
Contrast taped back neck.
Contrast side seams and underarms with piping detail.
Open sleeves. Taped shoulder seams. Half moon yoke. Three button slanted placket.
Contrast side vents. Spare button.

ACCREDITATIONS



Factory is audited annually by BSCI

COLOURS



KK606 Men's KK706 Women's

St. Mellion Polo



SIZES

KK606
XS - 2XL

KK706

8 - 20

see page 211 for full size spec and European sizing.

FABRIC

100% combed cotton pique

WEIGHT

210gsm

FEATURES



1 x 1 rib flat knit collar and cuff with contrast stripe. Three button slanted top placket. Contrast inner placket. Taped shoulder seams. Contrast taped back neck and side vents. Spare button.

KK606 - Horn effect buttons.

KK706 - Pearl effect buttons.

ACCREDITATIONS



Factory is audited annually by BSCI

COLOURS



white bright red white navy light blue white



navy white navy sun yellow navy light blue



black white* black yellow* black lime*



black bright red*

*KK606 only



KK448 Men's KK748 Women's

Essential Polo



SIZES
KK448
S - 2XL

KK748
8 - 18
see page 211 for full size spec
and European sizing.

FABRIC
65/35 polyester/cotton pique

WEIGHT
185gsm

FEATURES



1 x 1 flat knit collar and cuffs
with contrast tipping. Contrast
piping down placket edge
(KK448 three button, KK748
four button). Taped shoulder
seams. Contrast taped side
vents. Spare button.

ACCREDITATIONS



Factory is audited annually by BSCI

COLOURS



lime
white raspberry
white**



royal
white* navy
white*



black
white

*KK448 only
**KK748 only



KK415

Contrast Tipped Fashion Fit Polo



SIZES
S - 2XL
see page 211 for full size spec and European sizing.

FABRIC
65/35 polyester/cotton pique

WEIGHT
185gsm

FEATURES



1 x 1 rib flat knit collar with contrast stripe. Contrast coloured sleeve with 1 x 1 rib flat knit cuff and contrast stripe. Contrast tape to back neck and side vents. Taped shoulder seam. Dropped back hem.

ACCREDITATIONS



Factory is audited annually by BSCI

COLOURS



KK615

Oak Hill Polo



SIZES
S - 2XL
see page 211 for full size spec and European sizing.

FABRIC
100% combed cotton pique

WEIGHT
210gsm

FEATURES



1 x 1 rib flat knit collar with open cuffs. Three button slanted top placket. Contrast taped back neck, inserts to front and back raglan, placket, cuff piping and side vents. Spare button.

ACCREDITATIONS



Factory is audited annually by BSCI

COLOURS



KK617

Scottsdale Polo



SIZES
S - 2XL
see page 211 for full size spec and European sizing.

FABRIC
100% combed cotton pique

WEIGHT
210gsm

FEATURES



1 x 1 rib flat knit collar with open cuffs. Three button slanted top placket. Contrast panels front and back. Contrast placket, taped back neck, cuff piping and taped side vents. Taped shoulder seams. Spare button.

ACCREDITATIONS



Factory is audited annually by BSCI

community reg. design No.001630781-0002

COLOURS



KK619

Slim Fit Club Style Polo



SIZES
XS - 2XL
see page 211 for full size spec and European sizing.

FABRIC
100% combed cotton pique

WEIGHT
210gsm

FEATURES



1 x 1 rib flat knit collar and cuffs. Narrow three button straight top placket. Contrast underside to collar, inner placket and underside of cuff. Taped contrast back neck and taped side vents. Taped shoulder seams. Spare button.

ACCREDITATIONS



Factory is audited annually by BSCI

COLOURS



KUSTOM KIT®

CLASSIC COLLECTION

KK705

Kate Comfortec® Polo



SIZES

8 - 20
20 in white & black only
see page 211 for full size spec
and European sizing.

FABRIC

98/2 cotton/Lycra® pique

WEIGHT

210gsm

FEATURES



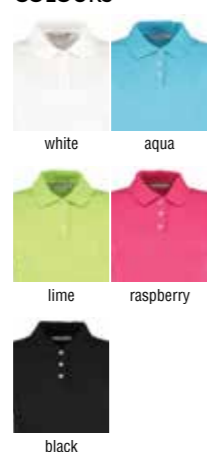
1 x 1 rib flat knit collar and cuffs.
Slanted three button placket.
Taped shoulder and back neck.
Side vents. Spare button.

ACCREDITATIONS



Factory is audited annually by BSCI

COLOURS



KUSTOM KIT®

CLASSIC COLLECTION

KK732

Sophia V Neck Comfortec® Polo



SIZES

8 - 18
see page 211 for full size spec
and European sizing.

FABRIC

98/2 cotton/Lycra® pique

WEIGHT

210gsm

FEATURES



1 x 1 rib flat knit collar and
cuffs. Narrow two button V
neck placket. Taped shoulder
and back neck. Side vents.
Spare button.

ACCREDITATIONS



Factory is audited annually by BSCI

COLOURS



KUSTOM KIT®

CLASSIC COLLECTION

KK430

Men's Long Sleeve Polo



SIZES

S - 2XL
see page 211 for full size spec and European sizing.

FABRIC

65/35 polyester/cotton pique

WEIGHT

200gsm

FEATURES



1 x 1 rib flat knit collar. 2 x 2 rib cuffs with elastane. Three button slanted top placket. Taped shoulder seams and back neck. Side vents. Tear out back neck label. Spare button.

ACCREDITATIONS



Factory is audited annually by BSCI

COLOURS



graphite navy



black



KUSTOM KIT®

CLASSIC COLLECTION

KK500

Men's Hunky® Superior Tee



SIZES

S - 6XL
4XL - 6XL in white, black & navy only
see page 211 for full size spec and European sizing.

FABRIC

100% combed cotton single jersey

WEIGHT

180gsm

FEATURES



Superior printing surface. Taped reinforced shoulder seams. 1 x 1 rib neck. Taped back neck.

ACCREDITATIONS



Factory is audited annually by BSCI

COLOURS



white black



turquoise navy



KK504 Men's KK754 Women's

Fashion Fit Tee



SIZES

KK504
XS - 3XL

KK754

8 - 18

see page 211 for full size spec and European sizing.

FABRIC

65/35 polyester/cotton

WEIGHT

160gsm

FEATURES



1 x 1 ribbed crew neck. Self fabric back neck and shoulder tape. Twin needle hem and cuffs. Tear out back neck label.

Please note: Superwash 60°C wash can only be guaranteed on non decorated garments.

ACCREDITATIONS



ACCORD
Factory is audited annually by BSCI

COLOURS



white light grey marl sage marl*



yellow marl* bright orange marl* lime marl



coral marl** pink marl** red



turquoise marl* royal* denim marl*



dark grey marl navy black

*KK504 only

**KK754 only



KK302

Klassic Sweatshirt



SIZES

XS - 4XL
4XL in black, navy & dark grey marl only.
see page 211 for full size spec
and European sizing.

FABRIC

65/35 polyester/cotton
brushed back jersey

WEIGHT

280gsm

FEATURES



Self coloured tape to back neck.
Self fabric double layered cuff and
welt. Tear out back neck label.

Please note: Superwash 60°C wash can only be
guaranteed on non decorated garments.

ACCREDITATIONS



Factory is audited annually by BSCI

COLOURS



royal

navy



dark grey marl

black



red



KK933

Men's NEW Slim Fit Sweat Pant



SIZES

XS - 2XL
see page 211 for full size spec
and European sizing.

FABRIC

65/35 polyester cotton

WEIGHT

250gsm

FEATURES



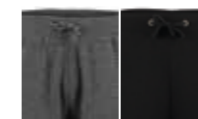
1 x 1 rib elasticated waistband.
Self colour flat cord tie with
brushed metal finals threaded
through waistband. Brushed
metal eyelets. Two side pockets.
Back patch pocket. Doubled
layer 1 x 1 ribbed ankle cuffs.

ACCREDITATIONS



Factory is audited annually by BSCI

COLOURS



dark grey marl

black



navy



KK303

Klassic Hooded Zipped Jacket



SIZES

XS - 3XL
see page 211 for full size spec and European sizing.

FABRIC

65/35 polyester/cotton
brushed back jersey

WEIGHT

280gsm

FEATURES



Full front zip. Self fabric lined hood. Self fabric double layered cuff and welt. Taped shoulder. Flat tape cord through hood, channel finished with metal eyelets. Double pocket to front centre. Flatlock seaming detail. Brushed silver metal hardware. Tear out back neck label.

Please note: Superwash 60°C wash can only be guaranteed on non decorated garments.

ACCREDITATIONS



Factory is audited annually by BSCI

COLOURS



KK306

Knitted Fleece



SIZES

S - 2XL
see page 211 for full size spec and European sizing.

COLOURS



FABRIC

100% polyester knit bonded with
100% polyester micro fleece

WEIGHT

400gsm

FEATURES



Full front zip. Raglan sleeves. Two zipped side pockets. Straight hem. Shaped self fabric decorative panel to sleeves. Flat lock seaming details.

ACCREDITATIONS



Factory is audited annually by BSCI



KK954 Men's KK934 Women's

Corporate Soft Shell Jacket



SIZES

KK954
S - 3XL
3XL in black, navy & graphite only.

KK934
8 - 18
see page 211 for full size spec
and European sizing.

FABRIC

96/4 polyester/spandex bonded
with 100% polyester micro fleece

WEIGHT

320gsm

FEATURES



Full front zip. Zipped chest pocket.
Two zipped side pockets. Self fabric
feature panelling to sleeves,
shoulder and sides. Adjustable cuff
tabs with hook & loop fastening
(KK954). Straight front hem,
curved dropped back hem with
elasticated draw cord and toggles.
Mesh lined front panels with
zipped access for decoration.

ACCREDITATIONS



Factory is audited annually by BSCI

COLOURS



royal* navy



graphite black



red*

*KK954 only

NEW



KK903 Men's KK904 Women's

Grizzly® Fleece



SIZES

KK903

XS - 3XL

KK904

XS - XL

see page 211 for full size spec and European sizing.

COLOURS



navy

black

FABRIC

100% spun polyester
anti-pill polar fleece

WEIGHT

300gsm

FEATURES



KK903 KK904

Chunky full zip fastening.

Two full size side pockets with padded woven zip pulls.

KK903 - Elasticated cuff and hem.

KK904 - Straight cuff and hem.

ACCREDITATIONS



Factory is audited annually by BSCI





Workwear

Workwear that's stylish and comfortable but also extremely durable.

KK400 Workwear Polo	126-127
KK407 Chunky® Polo	128
KK408 Slim Fit Klassic Heavyweight Polo	129
KK435 Shoulder Patch Polo	130-131
KK806 Workwear Trouser	132
KK906 Workwear Fleece	133

KK400

Workwear Polo



SIZES

XS - 5XL
4XL & 5XL in white, black & navy only and to order in all colours. see page 211 for full size spec and European sizing.

FABRIC

65/35 polyester/cotton pique

WEIGHT

180/185gsm

FEATURES



1 x 1 rib flat knit collar and cuffs. Taped back neck. Slanted placket top. Three horn effect buttons. Taped shoulder seams. Spare button.

Please note: Superwash 60°C wash can only be guaranteed on non decorated garments.

ACCREDITATIONS



Factory is audited annually by BSCI

COLOURS



KK407

Chunky® Polo



SIZES

S - 2XL
see page 211 for full size spec and European sizing.

FABRIC

65/35 polyester/cotton pique

WEIGHT

220gsm

FEATURES



1 x 1 rib flat knit collar and cuffs. Taped back neck. Slanted placket top. Three horn effect buttons. Taped shoulder seams. Side vents. Spare button.

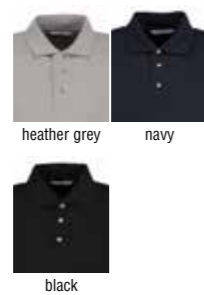
Please note: Superwash 60°C wash can only be guaranteed on non decorated garments.

ACCREDITATIONS



Factory is audited annually by BSCI

COLOURS



KK408

Slim Fit Klassic Heavyweight Polo



SIZES

XS - 2XL
see page 211 for full size spec and European sizing.

FABRIC

65/35 polyester/cotton pique

WEIGHT

220gsm

FEATURES



1 x 1 rib flat knit collar and cuffs. Taped back neck. Narrow three button slanted top placket. Taped shoulder seams. Side vents. Tear out back neck label. Spare button.

Please note: Superwash 60°C wash can only be guaranteed on non decorated garments.

ACCREDITATIONS



Factory is audited annually by BSCI

COLOURS



KK435

Shoulder Patch Polo



SIZES

S - 3XL
see page 211 for full size spec
and European sizing.

FABRIC

65/35 polyester/cotton pique

WEIGHT

185gsm

FEATURES



1 x 1 rib flat knit collar and cuffs. Taped back neck. Three button straight top placket. Wadded patch to shoulders with seaming detail. Side vents. Spare button.

Please note: Superwash 60°C wash can only be guaranteed on non decorated garments.

ACCREDITATIONS



Factory is audited annually by BSCI

COLOURS



graphite navy black



KK806

Workwear Trousers



SIZES

28 - 46" waist
S R L leg lengths
see page 211 for full size spec
and European sizing.

COLOURS



FABRIC

65/35 polyester/cotton canvas
Teflon® coated

WEIGHT

260gsm

FEATURES



Two side pockets. Phone pocket with hook & loop fastening flap suitable for modern smart-phones. Large multi compartment pockets to legs with hook & loop fastened flaps. Two back pockets, one with hook & loop fastened flap. All pocket flaps have tape pullers. Double layered fabric to seat. Hidden internal pockets for knee pads. Metal zip and button fly. Belt loops with extra key loop.

ACCREDITATIONS



Factory is audited annually by BSCI



KK906

Workwear Fleece



SIZES

S - 2XL
see page 211 for full size spec
and European sizing.

COLOURS



FABRIC

100% polyester micro fleece
with 100% taslan patches

WEIGHT

360gsm

FEATURES

Double layer bonded microfleece. Zipped chest pocket. Two side front zipped pockets. Water repellent taslan patches to yoke and elbows. Straight front hem, curved dropped back hem. Metal zips with cord pullers.

ACCREDITATIONS



Factory is audited annually by BSCI





KUSTOM KIT
bargear[®]

Hospitality Wear

Stylish and practical uniforms for the hospitality sector.

KK120 Men's Bar Shirt short sleeve	136-137
KK735 Women's Bar Shirt short sleeve	136-137
KK121 Men's Bar Shirt long sleeve	138-139
KK738 Women's Bar Shirt long sleeve	138-139
KK745 Women's 3/4 sleeve Bar Shirt	140
KK795 Women's cap sleeve Bar Shirt	141
KK122 Men's Mandarin Collar Bar Shirt short sleeve	142-143
KK736 Women's Mandarin Collar Bar Shirt short sleeve	142-143
KK123 Men's Mandarin Collar Bar Shirt long sleeve	144-145
KK740 Women's Mandarin Collar Bar Shirt long sleeve	144-145
KK124 Men's Bar Polo Shirt	146-147
KK511 Men's Cafe Bar Top	148-149
KK512 Women's Cafe Bar Top	148-149
KK513 Short Apron	150
KK514 Long Apron	151
KK515 Bar Bib Apron	152-153
KK517 Bib Apron	154-155
KK518 Bib Apron with Pocket	154-155

KK120 Men's KK735 Women's

Bar Shirt

Short Sleeve



SIZES

KK120
S - 2XL

KK735
8 - 20

see page 211 for full size spec
and European sizing.

COLOURS



black

FABRIC

57% mercerised cotton
40% polyester
3% Lycra

WEIGHT

120gsm

FEATURES



Regular fused stand up collar.
Stretch cotton blend fabric for
comfort and fit. Rounded hem.
Spare button.

KK735 - Four darts to front.
Four darts to back. Concealed
front placket.

ACCREDITATIONS



Factory is audited annually by BSCI



KK121 Men's KK738 Women's

Bar Shirt

Long Sleeve



SIZES

KK121

S - 2XL

KK738

8 - 20

see page 211 for full size spec
and European sizing.

COLOURS



black

FABRIC

57% mercerised cotton
40% polyester
3% Lycra

WEIGHT

120gsm

FEATURES



Regular fused stand up collar.
Stretch cotton blend fabric for
comfort and fit. Adjustable
one button cuff. Rounded hem.
Spare button.

KK738 - Two darts to front.
Two darts to back.

ACCREDITATIONS



Factory is audited annually by BSCI



KK745

Women's 3/4 Sleeve Bar Shirt



SIZES

8 - 20
see page 211 for full size spec
and European sizing.

COLOURS



black

FABRIC

57% mercerised cotton
40% polyester
3% Lycra

WEIGHT

120gsm

FEATURES



Soft fused open collar. Stretch cotton blend fabric for comfort and fit. 3/4 sleeves with turn back cuffs. Two darts to front. Two darts to back. Rounded hem. Spare button.

ACCREDITATIONS



Factory is audited annually by BSCI



KK795

Women's Cap Sleeve Bar Shirt



SIZES

8 - 20
see page 211 for full size spec
and European sizing.

COLOURS



black

FABRIC

57% mercerised cotton
40% polyester
3% Lycra

WEIGHT

120gsm

FEATURES



Soft fused open collar. Stretch cotton fabric for comfort and fit. Cap sleeves. Princess seamed front with four darts to back. Rounded hem. Spare button.

ACCREDITATIONS



Factory is audited annually by BSCI



KK122 Men's KK736 Women's

Mandarin Collar Bar Shirt Short Sleeve



SIZES

KK122

S - 2XL

KK736

8 - 20

see page 211 for full size spec
and European sizing.

COLOURS



black

FABRIC

57% mercerised cotton

40% polyester

3% Lycra

WEIGHT

120gsm

FEATURES



Soft fused mandarin collar. Concealed
placket. Stretch cotton blend fabric
for comfort and fit. Rounded hem.
Spare button.

KK122 - Two pleats to back.

KK736 - Two darts to front. Two
darts to back. Side vents.

ACCREDITATIONS



Factory is audited annually by BSCI



KK123 Men's KK740 Women's

Mandarin Collar Bar Shirt Long Sleeve



SIZES

KK123

S - 2XL

KK740

8 - 20

see page 211 for full size spec
and European sizing.

COLOURS



black

FABRIC

57% mercerised cotton

40% polyester

3% Lycra

WEIGHT

120gsm

FEATURES



Soft fused mandarin collar. Concealed
placket. Stretch cotton blend fabric for
comfort and fit. Rounded hem. Spare
button. Adjustable one button cuff.

KK123 - Two pleats to back.

KK740 - Two darts to front. Two darts
to back. Side vents.

ACCREDITATIONS



Factory is audited annually by BSCI



KK124

Men's Bar Polo



SIZES

S - 2XL
see page 211 for full size spec
and European sizing.

FABRIC

100% cotton

WEIGHT

160gsm

FEATURES



3 button placket. Cotton jersey with woven collar. Self fabric double layer applied cuff. Side vents with woven taping to reverse. Straight hem. Spare button.

ACCREDITATIONS



Factory is audited annually by BSCI

COLOURS



black



KK511 Men's KK512 Women's

Cafe Bar Top



SIZES

KK511
S - 2XL

KK512

8/10 - 20/22

see page 211 for full size spec
and European sizing.

COLOURS



black

FABRIC

95% cotton
5% elastane

WEIGHT

200gsm

FEATURES



Elastane fabric for enhanced fit.
Narrow mitred 1 x 1 rib V neck.
Shaped side seams. Straight hem.
Taped shoulder seams.

ACCREDITATIONS



Factory is audited annually by BSCI



KK513

Short Bar Apron



SIZES

One size only

FABRIC

100% cotton twill

WEIGHT

280gsm

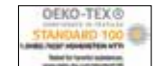
FEATURES



Unisex. Self fabric waist ties. Double pocket, one zipped one open.

Please note: Superwash 60°C wash can only be guaranteed on non decorated garments.

ACCREDITATIONS



COLOURS



KK514

Long Bar Apron



SIZES

One size only

FABRIC

100% cotton twill

WEIGHT

280gsm

FEATURES



Unisex. Self fabric waist ties. Double open pocket.

Please note: Superwash 60°C wash can only be guaranteed on non decorated garments.

ACCREDITATIONS



COLOURS



KK515

Bar Apron



SIZES

One size only

FABRIC

100% cotton twill

WEIGHT

280gsm

FEATURES



Unisex. Self fabric waist ties.
Adjustable neck. Double open
pocket.

Please note: Superwash 60°C wash can
only be guaranteed on non decorated
garments.

ACCREDITATIONS



COLOURS



KK517 Without Pocket KK518 With Pocket

Bib Apron NEW



SIZES

One size only

FABRIC

65/35 polyester/cotton twill

WEIGHT

190gsm

FEATURES



Unisex. Self fabric waist ties.
Adjustable neck with plastic
adjusters. Double front pocket
(KK518).

Please note: Superwash 60°C wash can
only be guaranteed on non decorated
garments.

ACCREDITATIONS



Factory is audited annually by BSCI

COLOURS



black





GAMEGEAR®

Sports & Fitness Apparel

Setting the benchmark for performance teamwear.

KK973 Men's Sports Vest	158-159
KK963 Women's Sports Vest	158-159
KK965 Racer Back Vest	160
KK939 Compact Stretch Tee	161
KK930 Men's Training Tee	162-163
KK940 Women's Training Tee	162-163
KK991 Men's Short Sleeve Tee	164-165
KK966 Women's Short Sleeve Tee	164-165
KK969 V Neck Team Top	166
KK976 Action Tee	167
KK730 Sleeveless Polo	168-169
KK938 Active Polo	170-171
KK972 Champion Polo	172
KK974 Riviera Polo	173
KK185 Sportsman Shirt	174-175
KK931 Warmtex® Base Layer short sleeve	176-177
KK979 Warmtex® Base Layer long sleeve	176-177
KK932 Warmtex® Base Layer Leggings	178-179
KK924 Men's Active Short	180-181
KK926 Women's Active Short	180-181
KK980 Track Short	182
KK986 Training Short	183
KK981 Sports Short	184-185
KK942 3/4 Length Leggings	186-187
KK943 Full Length Leggings	186-187
KK944 Contrast Full Length Leggings	188-189
KK971 Slim Fit Track Pant	190-191
KK935 Piped Slim Fit Track Pant	192-193
KK987 Training Pant	194-195
KK985 Men's Track Pant	196-197
KK961 Women's Track Pant	196-197
KK985k Kids Track Pant	196-197
KK913 Men's Sports Jacket	198-199
KK914 Women's Sports Jacket	198-199
KK920 Micro Fleece Track Jacket	200-201

KK973 Men's KK963 Women's

Sports Vest



SIZES

KK973
XS - 2XL

KK963
8 - 16

see page 211 for full size spec
and European sizing.

FABRIC

100% polyester micro mesh

WEIGHT

140gsm

FEATURES

Dry wicking fabric keeps you cool and comfortable. Superior printing surface. Straight front hem. Curved back hem. Contrast side panels with chevron detail.

ACCREDITATIONS



COOLTEX®

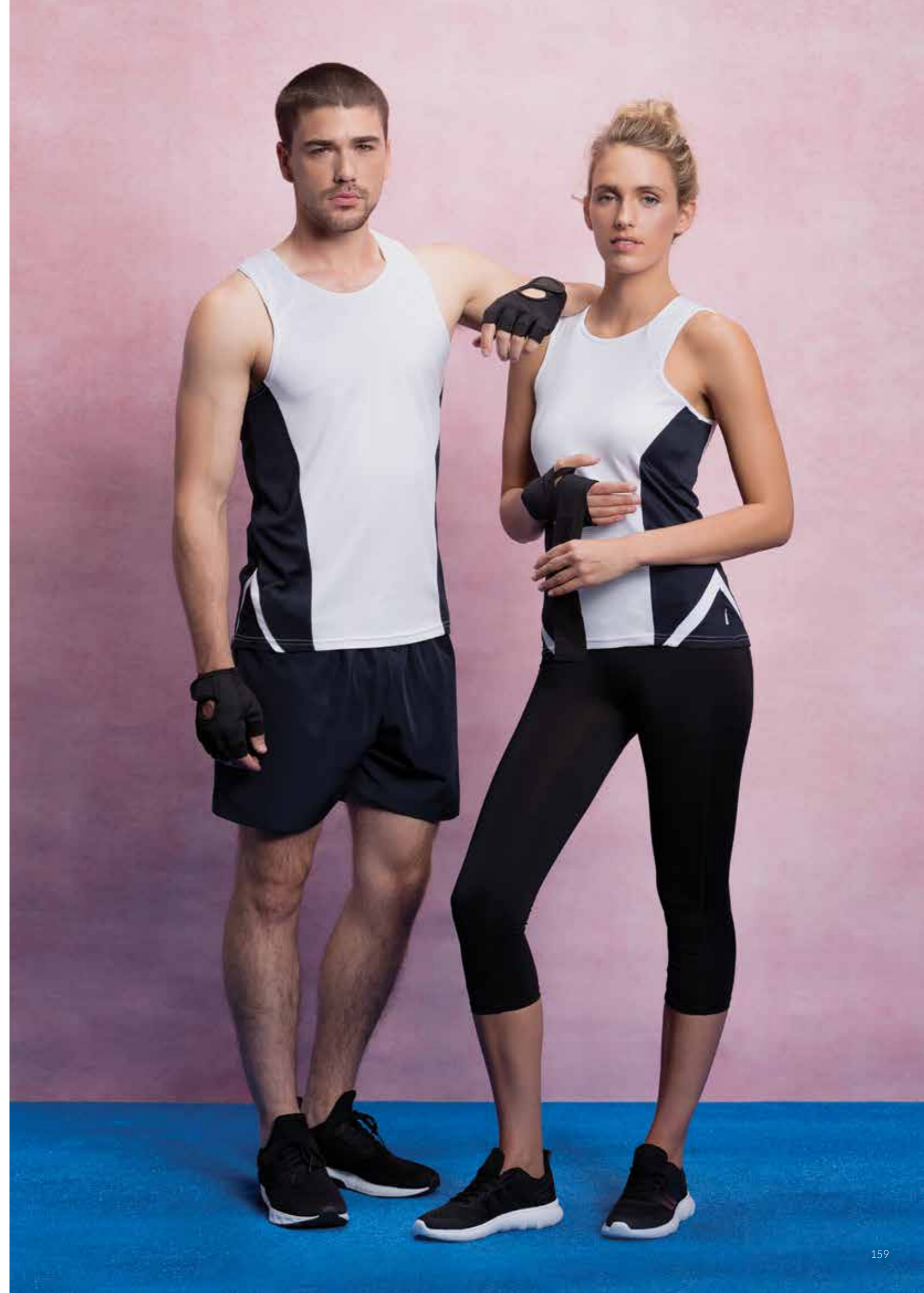
community reg. design No.001630781-0007

COLOURS



*KK973 only

**KK963 only



KK965

Racer Back Vest



SIZES

8-16
see page 211 for full size spec and European sizing.

FABRIC

90% cotton
5% viscose
5% elastane
100% polyester mesh inserts

WEIGHT

190gsm

FEATURES



Self fabric binding to neck and armholes. Polyester micromesh panels at sides shaped to contour. Straight front hem. Curved dropped back hem.

ACCREDITATIONS



Factory is audited annually by BSCI

COLOURS



grey
black black
fluorescent
coral



hot pink
melange
hot pink



KK939

NEW

Compact Stretch Tee



SIZES

XS-2XL
see page 211 for full size spec and European sizing.

FABRIC

90% polyester
10% spandex

WEIGHT

160gsm

FEATURES



Super soft compact fabric. Flatlocked shaped seams. Crew neck. Twin needle stitched hem and cuffs.

ACCREDITATIONS



Factory is audited annually by BSCI

COLOURS



grey melange black



KK930 Men's KK940 Women's

Training Tee



SIZES

KK930
S - 2XL

KK940

8 - 16

see page 211 for full size spec and European sizing.

FABRIC

100% polyester micro mesh

WEIGHT

140gsm

FEATURES

Dry wicking fabric, keeps you cool and comfortable. Superior printing surface. Contrast side panels. Contrast laid on binding on side panels. Straight front hem. Curved back hem.

KK930 - Self fabric round neck. Contrast shoulder panels.

KK940 - Contrast self fabric V neck.

ACCREDITATIONS



COOLTEX®

COLOURS



electric blue
fluorescent orange*

navy
electric blue



fluorescent pink
black**

purple
navy*



fluorescent lime
black

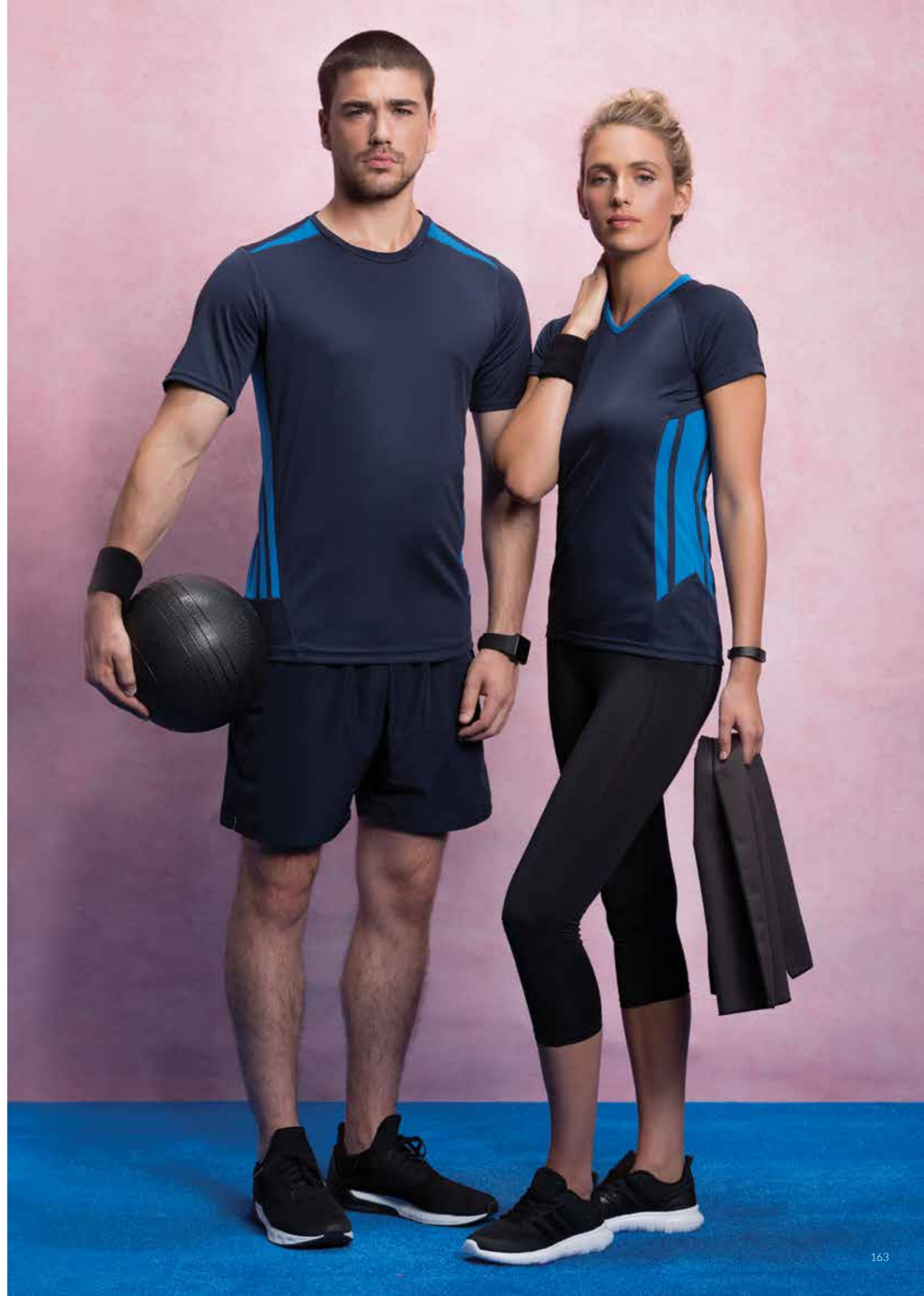
grey
fluorescent lime*



fluorescent orange
black

*KK930 only

**KK940 only



KK991 Men's KK966 Women's

Short Sleeve Tee



SIZES

KK991
XS - 3XL

KK966

8 - 16

see page 211 for full size spec and European sizing.

FABRIC

100% polyester mesh

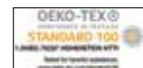
WEIGHT

140gsm

FEATURES

Dry wicking fabric keeps you cool and comfortable.
Superior printing surface.
Straight hem. Contrast shoulder and side detail.
Curved back hem (KK966 only).

ACCREDITATIONS



COLOURS



*KK991 only

**KK966 only



KK969

V Neck Team Top



SIZES

S-2XL
see page 211 for full size spec and European sizing.

FABRIC

100% polyester jersey knit with mesh contrast panels

WEIGHT

140gsm

FEATURES

Dry wicking fabric keeps you cool and comfortable. Superior printing surface. Self fabric V neck. Straight hem. Contrast side panels with chevron detail.

ACCREDITATIONS



COLOURS



white grey white red



fluorescent orange black fluorescent lime black



electric blue black navy white



navy light blue



KK976

Action Tee



SIZES

XS-2XL
see page 211 for full size spec and European sizing.

FABRIC

100% polyester micro mesh

WEIGHT

140gsm

FEATURES

Dry wicking fabric keeps you cool and comfortable. Superior printing surface. Contrast inner back neck and inner hem. Contrast front and back panels with flatlocking. Straight front hem, curved back hem.

ACCREDITATIONS



COLOURS



fluorescent orange grey electric blue fluorescent yellow



navy fluorescent lime black fluorescent pink



KK730

Sleeveless Polo



SIZES

8 - 20
see page 211 for full size spec
and European sizing.

FABRIC

100% cotton pique

WEIGHT

210gsm

FEATURES



1 x 1 rib flat knit collar.
Contrast three button placket
with contrast buttons. Contrast
tipping to collar and contrast
taped back neck and side vents.
Spare button.

ACCREDITATIONS



Factory is audited annually by BSCI

COLOURS



white
navy

raspberry
white



navy
white



KK938

Active Polo



SIZES

S - 2XL
see page 211 for full size spec
and European sizing.

FABRIC

100% polyester jersey knit
with mesh contrast panels

WEIGHT

140gsm

FEATURES

Dry wicking fabric keeps you
cool and comfortable. Superior
printing surface. 1 x 1 rib flat
knit collar with contrast tape
to inner collar. Contrast centre
sleeve, underarm and side
panels with white piping detail.
Straight hem. Three button
placket. Spare button.

COLOURS



ACCREDITATIONS



COOLTEX®



KK972

Champion Polo



SIZES

S-2XL
see page 211 for full size spec and European sizing.

FABRIC

100% polyester micro mesh

WEIGHT

140gsm

FEATURES

Dry wicking fabric keeps you cool and comfortable. Superior printing surface. 1 x 1 rib flat knit collar. Side vents. Three button placket.

ACCREDITATIONS



COOLTEX®

COLOURS



white navy



black



KK974

Riviera Polo



SIZES

S-2XL
see page 211 for full size spec and European sizing.

FABRIC

100% polyester jersey knit with mesh inlays

WEIGHT

140gsm

FEATURES

Dry wicking fabric keeps you cool and comfortable. Superior printing surface. Side vents. Straight front hem. Curved back hem. Comfort finish cuff seams with contrast tipped edge. Side seams. Spare button.

ACCREDITATIONS



COOLTEX®

COLOURS



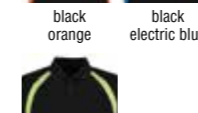
white grey white navy



navy white navy light blue



black orange black electric blue



black fluorescent lime



KK185

Sportsman Shirt



SIZES

S - 3XL
see page 211 for full size spec
and European sizing.

FABRIC

85/15 mercerised cotton/polyester

WEIGHT

125gsm

FEATURES



Fused stand up, button down collar
with contrast inner collar stand.
Side and underarm panels with
white piping detail. Concealed chest
pocket. Side vents. Straight hem.
Spare buttons.

ACCREDITATIONS



Factory is audited annually by BSCI

COLOURS



KK931 Short Sleeve KK979 Long Sleeve

WARMTEX®
Base Layer

The first part of any active layering system starts next to the skin, which is why our base layers are often referred to as a second skin.

The Warmtex® technology of our base layer garments traps a thin layer of warm air against the body and pulls sweat away from the skin. This process is known as 'wicking' and enables the base layer to keep you warm when it's cold and cool when it's warm.

Whilst used primarily for sports and team wear, Warmtex® garments also make a perfect base layer for workwear, providing unrivalled comfort and performance.



KK931
XS - 2XL

KK979
XXS - 2XL
see page 211 for full size spec
and European sizing.

FABRIC
90/10 polyester/spandex

WEIGHT
135gsm

FEATURES
Moisture management fabric
regulates body temperature. Self
fabric neck. Flat lock stitching on
all seams.

ACCREDITATIONS



COLOURS



white*

red*



navy*

black

*KK979 only



KK932

WARMTEX®

Base Layer Legging



KK931
S - 2XL
see page 211 for full size spec
and European sizing.

FABRIC
90/10 polyester/spandex
100% Cooltex® polyester mesh insert

WEIGHT
135gsm

FEATURES
Moisture management fabric
regulates body temperature.
Ergonomic seaming for comfort.
Elasticated waist. Flat cord internal
waist tie. Flat lock shaped seaming
to crotch. Polyester Cooltex® micro
mesh panel applied between legs.
Flat lock inside leg seam and shaped
flat lock outside leg seam.

ACCREDITATIONS



COLOURS



black



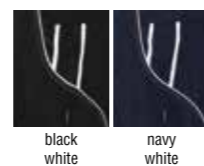
KK924 Men's KK926 Women's

Active Short



SIZES
KK924
S-2XL
KK926
8-16
see page 211 for full size spec
and European sizing.

COLOURS



FABRIC
100% polyester micro touch
100% polyester mesh lining (KK924)

WEIGHT
80gsm

FEATURES
Dry wicking fabric keeps you cool
and comfortable. Full elasticated
draw cord waist. Zipped back pocket.
Mesh insert detail to back and sides
placed below waistband. Contrast
piping and binding to sides. Side
vents.

ACCREDITATIONS



Factory is audited annually by BSCI



KK980

Track Short



SIZES

XS -2XL
see page 211 for full size spec
and European sizing.

FABRIC

100% polyester microfibre
with peach finish
100% polyester mesh lining

WEIGHT

115gsm

FEATURES

Full elasticated draw cord
waist. Two side pockets with
zips. Mesh lining. Contrast
piping down sides.

ACCREDITATIONS



Factory is audited annually by BSCI

COLOURS



red
white navy
white



black
white



KK986

Training Short



SIZES

XXS -2XL
see page 211 for full size spec
and European sizing.

FABRIC

100% polyester micro touch
100% polyester mesh lining

WEIGHT

80gsm

FEATURES

Dry wicking fabric keeps you
cool and comfortable. Full
elasticated draw cord waist.
Two side pockets. Mesh inner.
Side vents.

ACCREDITATIONS



Factory is audited annually by BSCI

COLOURS



navy black



KK981

Sports Short



SIZES

S - 2XL
see page 211 for full size spec
and European sizing.

FABRIC

100% polyester mesh
100% polyester mesh lining

WEIGHT

140gsm

FEATURES

Dry wicking fabric keeps you cool
and comfortable. Two rows of
contrast binding to outside leg.
Full elasticated draw cord waist.
Two side pockets. Mesh inner.
Superior printing surface.

ACCREDITATIONS



COOLTEX®

COLOURS



KK942 3/4 Length KK943 Full Length

Leggings



SIZES

8 - 16
see page 211 for full size spec
and European sizing.

FABRIC

89/11 polyester/spandex (grey melange)
92/8 polyester/spandex (black)

WEIGHT

180gsm (grey melange)
240gsm (black)

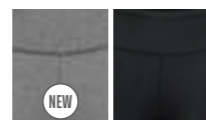
FEATURES

Wide double layered waistband with
narrow elastic concealed within.
Concealed zipped pocket to centre back
of waistband. Flat locked self fabric
panels ergonomically placed for comfort
and fit.

ACCREDITATIONS



COLOURS



grey melange black



KK944 Full Length

Contrast Legging NEW



SIZES

8 - 16
see page 211 for full size spec
and European sizing.

FABRIC

89/11 polyester/spandex (grey melange)
92/8 polyester/spandex (black)

WEIGHT

180gsm (grey melange)
240gsm (black)

FEATURES



Wide double layered waistband with narrow elastic concealed within. Concealed zipped back pocket to centre of waistband. Flat locked contrast side panels ergonomically placed for comfort and fit.

ACCREDITATIONS



COLOURS



grey melange black



KK971

Slim Fit Track Pant



SIZES

XS - 2XL
see page 211 for full size spec
and European sizing.

FABRIC

100% polyester interlock

WEIGHT

210gsm

FEATURES

Modern slim fit with tapered leg. Full elasticated waist with rounded cord internal waist tie. Self fabric panels to outside leg. Self fabric zipped pocket bags. Concealed zips to lower leg.

ACCREDITATIONS



Factory is audited annually by BSCI

COLOURS



navy

black



KK935

Piped Slim Fit Track Pant NEW



SIZES

XS - 2XL
see page 211 for full size spec
and European sizing.

FABRIC

100% polyester interlock

WEIGHT

210gsm

FEATURES



Full elasticated waist with rounded cord internal waist tie. Contrast piping to outside side seam. Zipped side pockets with self fabric pocket bags. Concealed zips to lower leg.

ACCREDITATIONS



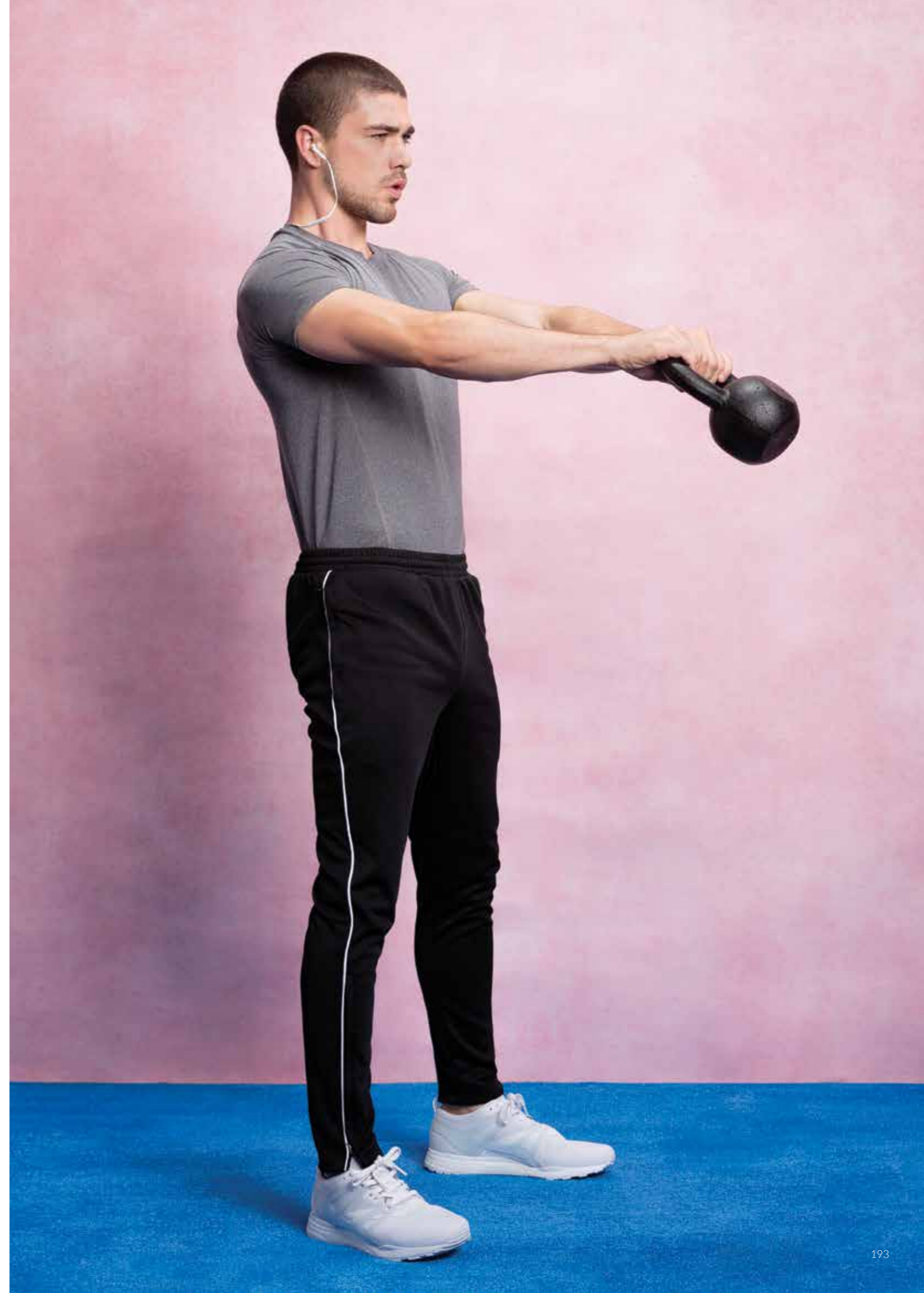
Factory is audited annually by BSCI

COLOURS



navy
white

black
white



KK987

Training Pant



SIZES

XXS - 2XL
see page 211 for full size spec
and European sizing.

FABRIC

100% polyester micro touch
100% polyester mesh lining to knee
100% nylon lining below knee

WEIGHT

80gsm

FEATURES

Dry wicking fabric keeps you cool
and comfortable. Lower leg opening
with zip fastening. Full elasticated
draw cord waist. Two side zipped
pockets. Mesh lining to knee. Nylon
lining from knee to hem.

ACCREDITATIONS



Factory is audited annually by BSCI

COOLTEX®

COLOURS



navy

black



KK985 Men's KK961 Women's KK985K Kids

Track Pant



SIZES
KK985
XS - 2XL

KK961
8 - 18

KK985K
ages 7/8 - 13/14
see page 211 for full size spec
and European sizing.

FABRIC

100% polyester microfibre outer
with peach finish
100% polyester mesh lining to knee
100% nylon lining below knee

WEIGHT
115gsm

FEATURES

Lower leg opening with zip fastening.
Full elasticated draw cord waist. Two
side zipped pockets. Mesh lining to
knee. Nylon lining from knee to hem.

ACCREDITATIONS



Factory is audited annually by BSCI

COLOURS



navy
white

black
white



KK913 Men's KK914 Women's

Sports Jacket NEW



SIZES
KK913
XS - 2XL
KK914
8 - 16
see page 211 for full size spec
and European sizing.

COLOURS



dark grey
melange black

FABRIC
93/7 polyester/spandex

WEIGHT
215gsm

FEATURES
Dropped back hem. Binding to hem,
cuff, hood & back neck. Two zipped
side pockets with self-fabric pocket
bags. Turned back zip cover/neck
protector.

ACCREDITATIONS



KK920

Micro Fleece Track Jacket



SIZES

S - 2XL
see page 211 for full size spec
and European sizing.

FABRIC

100% polyester micro fleece
100% polyester lining

WEIGHT

280gsm

FEATURES

Full front zip. Two front zipped
pockets. Inner zip for decoration
access. Contrast underarm and
side panels with contrast piping.
Contrast inner collar. Elasticated
cuffs. Curved back hem. Straight
front hem.

ACCREDITATIONS



Factory is audited annually by BSCI

COLOURS



navy
light blue

navy
red



black
orange

black
red





Motorsport Teamwear

Distinctive teamwear inspired by motorsport.

KK186 Sebring Shirt	203
KK516 Estoril T-Shirt	204
KK611 Monaco Polo Shirt	205
KK955 Monza Jacket	206
KK957 GT Soft Shell Jacket	207
KK958 P1 Micro Fleece Jacket	208
KK959 Clubman Hooded Top	209



KK186

Sebring Shirt



SIZES

S - 2XL
see page 211 for full size spec and European sizing.

FABRIC

85/15 mercerised cotton/polyester

WEIGHT

125gsm

FEATURES



Fused stand up button down collar with contrast to inner. Contrast to sleeve and shoulder panels with white piping detail. Concealed pocket. Straight hem with side vents. Spare button.

ACCREDITATIONS



Factory is audited annually by BSCI

COLOURS



royal black navy royal



red black black silver grey



KK516

Estoril Tee



SIZES

XXS - 2XL
 see page 211 for full size spec and European sizing.

FABRIC

100% cotton jersey knit

WEIGHT

180gsm

FEATURES



1 x 1 rib neck. Superior printing surface. Contrast sleeve, shoulder and side panels with white piping detail. Taped back neck and shoulder seams.

ACCREDITATIONS



Factory is audited annually by BSCI

COLOURS



KK611

Monaco Polo



SIZES

S - 2XL
 see page 211 for full size spec and European sizing.

FABRIC

100% cotton

WEIGHT

210gsm

FEATURES



1 x 1 rib flat knit collar. Contrast taped back neck. Contrast sleeve and yoke with white piping detail. Contrast side vents. Three button placket. Spare button.

ACCREDITATIONS



Factory is audited annually by BSCI

COLOURS



KK955

Monza Jacket



SIZES

S - 2XL
see page 211 for full size spec and European sizing.

FABRIC

100% nylon taslan PU milky coating
100% polyester mesh inner body (with polyester fleece to lower body)
100% polyester lined sleeves

WEIGHT

228T

FEATURES



Contrast sleeve, shoulder, side and inner storm flap. White piping details. Elasticated draw cord hem with adjustable toggles. Zipped front with double storm flap and hook & loop fastening. Fully waterproof with taped seams. Adjustable hook & loop fastened cuffs. Concealed hood. Two side zipped pockets, vertical zipped chest pocket and inner phone pocket. Inner zip for decoration access.

ACCREDITATIONS



Factory is audited annually by BSCI

COLOURS



KK957

GT Soft Shell Jacket



SIZES

S - 2XL
see page 211 for full size spec and European sizing.

FABRIC

94/6 polyester/elastane with TPU membrane outer
100% polyester micro fleece inner

WEIGHT

300gsm

FEATURES



Full front zip. Front vertical chest pocket with waterproof zip. Two zipped front pockets. Contrast centre sleeve panel with white piping. Elasticated cuffs with adjustable hook & loop fastening. Straight front hem, curved back hem. Elasticated draw cord hem with adjustable toggles. Showerproof. Breathable.

ACCREDITATIONS



Factory is audited annually by BSCI

COLOURS



KK958

P1 Micro Fleece Jacket



SIZES

S - 2XL
 see page 211 for full size spec and European sizing.

COLOURS



FABRIC

100% polyester micro polar fleece with 100% nylon taslan inserts
 100% polyester lining

WEIGHT

280gsm

FEATURES



Full front zip. Two front zipped pockets with contrast nylon taslan top. Contrast nylon taslan centre sleeve panel. Contrast piping down raglans and across pocket tops. Elasticated cuffs. Curved back hem. Straight front hem with elasticated draw cord and adjustable toggles. Inner zip for decoration access.

ACCREDITATIONS



KK959

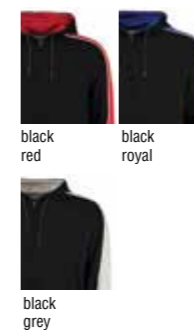
Clubman Hooded Top



SIZES

XS - 2XL
 see page 211 for full size spec and European sizing.

COLOURS



FABRIC

60/40 cotton/polyester French terry
 100% cotton hood lining

WEIGHT

280gsm

FEATURES



Chunky front zip with Gamegear® puller. 2 x 2 rib cuff and hem. Two front pockets. Contrast centre seam panel with white piping detail. Fully cotton lined contrast hood. Matching draw cord.

ACCREDITATIONS



Factory is audited annually by BSCI



HOW WE MEASURE UP

PROVIDING UNIFORMITY WHILE CATERING FOR THE INDIVIDUAL

We understand that everybody is different so our shirts are available in a huge range of sizes and fits to ensure the whole workforce looks and feels great! This guide will help you find your perfect Kustom Kit shirt and understand how each of our shirts will fit you personally.

WHAT'S MY SIZE?

To decide on the best fit for you, it's important to know your measurements. Firstly measure your chest around the fullest part and refer to our measuring guide on page 211. Next measure your collar, around the base of your neck whilst keeping your index finger between the tape and your neck, again refer to the measuring guide. The measuring guide is in actual body measurements not garment measurements, so if your chest measures 43"/112cms and your collar measures 17"/43cms we recommend that you take a 17" collar Kustom Kit shirt.

WHAT IF I AM IN-BETWEEN SIZES?

This will depend on how you like to wear your shirts. Classic shirts are cut more generously so will be more forgiving if you size down. Slim fit shirts however are neatly cut so we would recommend sizing up if you are between sizes.

MY COLLAR SIZE IS DIFFERENT TO MY CHEST SIZE

If you intend to wear a tie we recommend buying to your collar size measurement to ensure a neat and comfortable fit. Choose a classic fit if you use your collar size and a slim fit if you use your chest size. If you intend to wear the top button open then you should fit your shirt to your chest rather than your collar measurement.

STILL UNSURE?

Kustom Kit can provide size charts for all garments upon request and our Customer Services team will be happy to answer any queries that you may have.

WHAT'S MY FIT?

Kustom Kit offers 3 different shirt fits



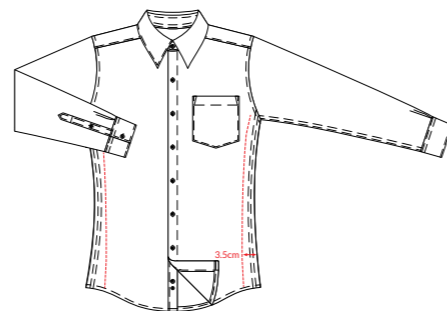
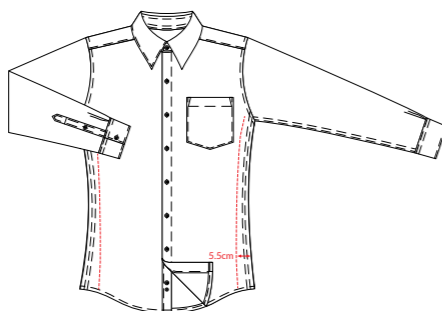
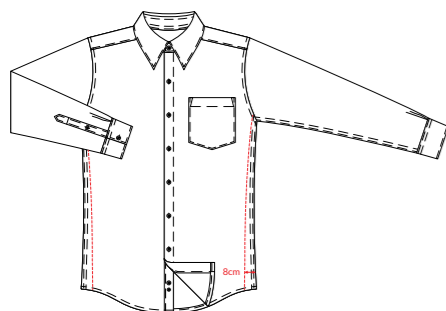
A traditional silhouette featuring straight side seams and a more generous fit across the chest, waist and sleeves. Cut with a long shirt tail that stays tucked in and wide armholes for ease of movement. Our classic shirts will have either side pleats or a central pleat to the back yoke for a non restrictive and comfortable fit. As a guide based on a 17" collar shirt the actual chest measurement will be 16cms larger than your actual chest and 32cms larger than your actual waist. Sounds a lot? Not really when you consider these measurements in a 3 dimensional context, refer to the illustration below.



Our tailored fit shirts are just that! Tailored through the body and sleeve for a closer fit that is both smart and contemporary. We taper the waist to ensure a clean silhouette while retaining an unrestricting garment shape. As a guide based on a 17" collar shirt the garment chest measurement will be 12cms larger than your actual chest and 22cms larger than your actual waist.



Our closest fitting shirt is tailored through the body and sleeve. For a sleek appearance we taper the waist and add darts to the back. We keep the cut narrow at the shoulder and lift the armhole to enhance the modern slim silhouette. The result is a surprisingly flattering wearable garment that suits all. As a guide based on a 17" collar shirt the garment chest measurement will be 12cms larger than your actual chest and 14cms larger than your actual waist.



TECHNICAL DEFINITIONS

ADJUSTABLE CUFFS

Dual buttoning on cuff giving optional fastening for extra comfort.

ANTI-PILL

The surface of the fabric is treated to reduce the possibility of pilling.

COMBED COTTON

Yarn is combed at the spinning stage in order to draw out dead fibres.

COOLTEX

Technical fabric finish to wick moisture away from the skin, keeping the wearer cool and comfortable.

EASY IRON

A special finish to the surface of the fabric which reduces creases and minimises ironing.

FLAT KNIT COLLAR

Individually knitted to size, will not fray or curl.

FUSED COLLAR

An interlining is fused into the collar to help retain its shape.

GAUGE

How knitwear garment weights are measured. The higher the gauge, the finer the garment.

GSM

Stands for grams per square metre, referring to fabric weight.

HALF MOON YOKE

Styling detail sewn on to the back neck of the garment.

PRINCESS SEAMS

Long rounded seams used in women's tailoring for an enhanced fit.

REINFORCED SHOULDER

Tape inserted into the seam giving extra strength.

SELF FABRIC BOUND NECK

The fabric is passed through a folder to neaten the neck edge ensuring improved neck shape and comfort.

SIDE VENTS

Small opening at the base of side seam for a comfortable sporty look.

SLANTED PLACKET

Corner of placket is slightly tapered to prevent curling around the collar.

SUPERWASH 60°

A hi-tech fabric that allows the garment to be washed up to 60° for the removal of stubborn stains without affecting shape or colour.

TAPED BACK NECK

Self fabric tape attached to the neck giving a smooth and comfortable finish.

TAPED SIDE VENTS

Side vents are sealed with woven tape for extra strength.

TWIN NEEDLE STITCHING

Two rows of stitching at key seams for strength, style and neatness.

WARMTEX

Technical fabric finish to regulate body temperature - to keep the wearer warm when it's cold and cool when it's warm.

FABRICS EXPLAINED

ACRYLIC

- Excellent insulation and warmth
- Moisture wicking
- Lightweight

LYCRA, ELASTANE AND SPANDEX

- Ability to stretch and return to original state
- Moisture wicking
- Bacteria resistant nature

MERCERISED COTTON

- Stronger than regular cotton
- Lustrous appearance which is easier to dye and hold colour
- Clean and smooth surface

NYLON

- Extremely durable
- Lightweight for added comfort
- Does not wrinkle

POLYESTER

- Suited to sublimation
- Strong and durable
- Does not shrink
- Inherent wicking properties

JERSEY

Jersey or single jersey as it is sometimes known is the most basic of knitted structures. Highly versatile with good natural stretch, this knit construction can be used to produce fine fabrics for T shirts through to heavier fabrics for sweaters.

1 x 1 RIB

Rib is a variation of Jersey knit fabric. Stitches are knitted to the front and back of the fabric alternatively which produces ridges or lines. This construction has high stretchability making it perfect for cuffs and neck trims.

INTERLOCK

Interlock or double knitted jersey is a variation of jersey and rib. Stitches are knitted on the front and the back of the fabric to produce a heavier structure. The resulting fabric has less stretch but more stability and its compact structure makes an excellent print base.

FLEECE

Fleece is produced by brushing polyester/poly blended knitted fabrics. This creates the deep, fluffy fabric with insulating properties. For outdoor fleeces, two sided fleece is used while one sided fleece is used for the inside of sweats and hoodies.

OXFORD

Cotton or cotton blend yarns are woven in a basket weave construction to produce a hardwearing, textured surface.

PIQUÉ

Piqué refers to a knitted fabric generally used for polo shirts. It has a double knit construction knitted off circular machines which is characterised by its waffle/honeycomb texture. Thanks to the construction method it is durable and naturally wicking.

POPLIN

Poplin fabric is produced using a simple over/under weave. The yarns are typically very fine to produce a tight weave that has a smooth texture.

TWILL

Twill is a type of a weave that can be identified by its diagonal, parallel ridges. It is both refined and hardwearing.

ETHICAL STATEMENT

Kustom Kit believes that business should be conducted with total respect for people and the environment. We adopt a rigorous selection process for garment manufacturers, ensuring only those that are totally committed to exceeding our high ethical standards become appointed suppliers. We have never purchased from a supplier that we haven't inspected and approved personally.

We do not own our factories and choose instead to build strong working relationships with carefully selected suppliers. We employ local agents and staff based in each of our garment factories whose sole focus is to ensure total compliance of our strict ethical standards for suppliers and to test fabric and finished garments at source.

SUPPLY CHAIN CODE OF CONDUCT COMPLIANCE

Our products are manufactured by different supplier organisations employing thousands of people in several countries. We recognise and honour our duty to protect the workforce employed to manufacture our garments and work tirelessly with our suppliers to ensure the provision of fair wages and working hours, safe and hygienic working conditions, regular employment and no discrimination, harsh or inhumane treatment of employees.

In order to manufacture Kustom Kit garments, each appointed supplier must comply with national and other applicable laws and conform to the following terms as a minimum requirement:

- Children must not be employed below the legal minimum age required by the law of the individual country.
- Employees are to be paid above the legal minimum wage as required by the law of the individual country.
- Working hours must not exceed those set out by local legislation. Overtime must always be voluntary and remunerated at a premium rate.
- Maternity leave must be made available to all female employees.
- Employment is freely chosen and no discrimination is practiced. There is no use of forced or involuntary labour and employees are free to leave their employment after reasonable notice.
- Good working conditions must prevail. The provision of adequate wash room facilities and a canteen are essential.
- Primary medical care must be provided on site.
- Correct procedure and policies should be in place to ensure employee health and safety.
- Workers' representatives are not discriminated against and are allowed access to the workplace to carry out their representative functions.
- Ensure that their own supply chain shares our ethics and is compliant to Kustom Kit's code of conduct.
- We do not accept outsourcing or the use of homeworkers. Failure to adhere to this condition will result in breach of contract.
- Agree to an independent audit as specified by Kustom Kit.

FACTORY AUDITING

An ethical audit is a formal examination of the labour practices of a workplace or company. It is a verifiable process to understand, measure, report on and help improve an organisation's social and environmental performance.

As a further safeguard our garment manufacturers must agree to permit regular unannounced visits from our senior management team.

We demand that all of our garment manufacturers hold a valid audit from at least one of the following:



WRAP
Worldwide Responsible Accredited Production



BSCI
Business Social Compliance Initiative



SMETA
Sedex Members Ethical Trade Audit

MODERN SLAVERY STATEMENT

Modern slavery encompasses slavery, servitude, human trafficking and forced labour. We are committed to acting ethically and with integrity and transparency in all business dealings and to putting effective systems and controls in place to safeguard against any form of modern slavery taking place within the business or our supply chain.

Our suppliers

Kustom Kit operates a supplier policy and maintains a preferred supplier list. We conduct due diligence on all suppliers before allowing them to become a preferred supplier. This due diligence includes an online search to ensure that the particular organisation has never been convicted of offences relating to modern slavery and on-site audits that include a review of working conditions. Our anti-slavery policy forms part of our working agreement with all suppliers and they are required to confirm that no part of their business operations contradicts this policy. In addition to the above, as part of our contract with suppliers, we require that they confirm to us that:

- They adhere to our ethical policy.
- They hold at least one of the following factory audits; WRAP, SEDEX or BSCI.
- The factory makes audit reports available to Kustom Kit.
- They have taken steps to eradicate modern slavery within their business.
- They hold their own suppliers to account over modern slavery.
- They pay their employees any prevailing minimum wage applicable within their country of operations.
- They will allow UK employees to audit the factories when requested.
- We may terminate the contract at any time should any instance of modern slavery come to light.

OUR ENVIRONMENTAL POLICY

We recognise that our business activities affect the natural environment in a number of ways. We strive through continuing improvement to minimise the adverse effects on the environment and the earth's natural resources, whilst safeguarding the health & safety of our employees and the public. We purposely seek out suppliers who take positive action to minimise both waste and the impact of their manufacturing processes on the surrounding environment.

We aim to always:

- Comply with or exceed relevant legislative requirements. Where these are inadequate we will set our own standards that comply with our environmental and ethical criteria.
- Progressively reduce the environmental impact caused by our products and activities.
- Design and manufacture our products with consideration for the environment.
- Encourage manufacturing suppliers to recognise their environmental responsibilities and offer support to help them implement sound environmental health and safety policies and practices and to insist that the same practices are implemented within their own supply chain.
- Ensure that no chemicals deemed harmful to humans or the environment are present in our products.
- Insist that every component in all products hold a valid Oeko-Tex Standard 100 certificate to guarantee chemically safe garments.

European Regulation (EC 2006/1907-REACH regulation)

REACH is a European Regulation concerning chemicals and their safe usage. It aims to improve the protection of human health and the environment through a system of Registration, Evaluation, Authorisation and restriction of Chemicals. Chemicals deemed as harmful are added to the 'substance of very high concern list'. Kustom Kit products do not contain any of the chemicals on this list in any quantity and we actively work with REACH Ready to ensure compliance. The restricted substance list is usually updated twice a year. Kustom Kit routinely checks all products against any new listing to ensure we maintain this standard.



Oeko-Tex Standard 100

Oeko-Tex is an independent globally standardised certification especially developed for textiles. Its primary purpose is to ensure that the chemicals used in the manufacture of textile products are in no way damaging to health.

At Kustom Kit we understand what the modern wearer demands from their clothing. We expect colours to be brighter, we want our shirts to need little or no ironing and we require our sportswear to be fully functional keeping us both warm and dry. We test every component from fabric to thread, every label, lining, button and zip so that our customers never have to compromise on comfort or performance. Oeko-Tex Standard 100 allows Kustom Kit to deliver innovative fabrics and designs with complete confidence that no harmful chemicals have been used in their manufacture. Kustom Kit demands all products achieve this certification.



Oeko-Tex STeP - Promoting Sustainable Textile production

STeP is an additional factory audit which places emphasis on environmental performance and social responsibility. It is only gained by factories who achieve the highest level of sustainable production and safety ethics. The fabric used to manufacture the majority of our shirts is produced in a STeP accredited factory. We are working with our entire manufacturing base to encourage them to take part in the STeP auditing scheme.



SUMMARY

Kustom Kit confirms the following:

- All factories that manufacture Kustom Kit garments hold at least one of the following ethical audits - WRAP, BSCI or SMETA.
- That none of our products contain any of the current substances of very high concern in accordance to European Regulation (EC) 2006/1907 - Reach Regulation.
- All components used in our garments have been tested to Oeko-Tex Standard 100 and hold a current certificate testifying this fact.
- Our management team regularly audit all of our garment manufacturing facilities and key suppliers to these factories.

A full copy of our ethical statement is available on our website or by contacting Customer Services.

INDEX

CODE	PRODUCT	PAGE	CODE	PRODUCT	PAGE	CODE	PRODUCT	PAGE
KK100	Men's Workforce Shirt short sleeve	56	KK358	Men's Contrast Arundel Sweater	77	KK740	Women's Mandarin Collar Bar Shirt long sleeve	144
KK102	Men's Business Shirt short sleeve	44	KK359	Women's Long Line V Neck Cardigan	82	KK742F	Women's Business Shirt short sleeve	44
KK104	Men's Business Shirt long sleeve	46	KK360	Women's Workwear Oxford Shirt short sleeve	30	KK743F	Women's Business Shirt long sleeve	46
KK105	Men's Corporate Oxford Shirt long sleeve	26	KK361	Women's Workwear Oxford Shirt long sleeve	32	KK745	Women's Bar Shirt 3/4 sleeve	140
KK109	Men's Corporate Oxford Shirt short sleeve	24	KK385	Men's City Business Shirt short sleeve	50	KK747	Contemporary Business Shirt	65
KK113	Slim Fit Premium Oxford Shirt	36	KK386	Men's City Business Shirt long sleeve	52	KK748	Women's Essential Polo Shirt	104
KK114	Slim Fit Premium Non Iron Shirt	42	KK387	Women's City Business Shirt short sleeve	50	KK754	Women's Fashion Fit T-Shirt	114
KK115	Men's Premium Non Iron Corporate Shirt short sleeve	38	KK388	Women's City Business Shirt long sleeve	52	KK755	Corporate Top keyhole neck	66
KK116	Men's Premium Non Iron Corporate Shirt long sleeve	40	KK400	Workwear Polo Shirt	126	KK770	Corporate Top V neck mandarin collar	67
KK117	Executive Premium Oxford Shirt short sleeve	22	KK402	Jersey Knit Polo Shirt	98	KK789	Women's Contrast Premium Oxford Shirt	18
KK118	Executive Premium Oxford Shirt long sleeve	22	KK403	Men's Classic Polo Shirt	90	KK790	Women's Contrast Premium Oxford Shirt	16
KK120	Men's Bar Shirt short sleeve	136	KK404	Contrast Collar & Placket Polo Shirt	93	KK795	Women's Bar Shirt cap sleeve	141
KK121	Men's Bar Shirt long sleeve	138	KK405	Augusta Polo Shirt	99	KK806	Workwear Trouser	132
KK122	Men's Mandarin Collar Bar Shirt short sleeve	142	KK406	Kids Classic Polo Shirt	92	KK903	Men's Grizzly® Full Zip Active Fleece	122
KK123	Men's Mandarin Collar Bar Shirt long sleeve	144	KK407	Chunky® Polo Shirt	128	KK904	Women's Grizzly® Full Zip Active Fleece	122
KK124	Men's Bar Polo Shirt	146	KK408	Slim Fit Classic Heavyweight Polo Shirt	129	KK906	Workwear Fleece	133
KK131	Tailored Fit Business Shirt	43	KK409	Tipped Collar Polo Shirt	94	KK913	Men's Sports Jacket	198
KK133	Pilot Shirt short sleeve	54	KK413	Men's Slim Fit Classic Polo Shirt	86	KK914	Women's Sports Jacket	198
KK134	Pilot Shirt long sleeve	54	KK415	Contrast Tipped Fashion Fit Polo Shirt	106	KK920	Micro Fleece Track Jacket	200
KK136	Clayton & Ford Gingham Shirt	13	KK430	Men's Long Sleeve Polo Shirt	112	KK924	Men's Active Short	180
KK138	Clayton & Ford Check Shirt	14	KK435	Shoulder Patch Polo Shirt	130	KK926	Women's Active Short	180
KK139	Slim Fit Non Iron Oxford Twill Shirt	37	KK448	Men's Essential Polo Shirt	104	KK930	Men's Training T-Shirt	162
KK140	Men's Workforce Shirt long sleeve	58	KK449	Button Down Collar Contrast Polo Shirt	96	KK931	Warmtex® Base Layer short sleeve	176
KK141	Men's Poplin Shirt short sleeve	8	KK475	Track Polo Shirt	100	KK932	Warmtex® Base Layer Legging	178
KK142	Men's Poplin Shirt long sleeve	10	KK500	Hunky® Superior T-Shirt	113	KK933	Men's Slim Fit Sweat Pant	117
KK145	Clayton & Ford Contrast Shirt	15	KK504	Men's Fashion Fit T-Shirt	114	KK934	Women's Corporate Soft Shell Jacket	120
KK160	Men's Mandarin Collar Shirt short sleeve	60	KK511	Men's Cafe Bar Top	148	KK935	Piped Slim Fit Track Pant	192
KK161	Men's Mandarin Collar Shirt long sleeve	62	KK512	Women's Cafe Bar Top	148	KK938	Active Polo Shirt	170
KK183	Slim Fit Workwear Oxford Shirt short sleeve	34	KK513	Short Bar Apron	150	KK939	Compact Stretch T-Shirt	161
KK184	Slim Fit Workwear Oxford Shirt long sleeve	34	KK514	Long Bar Apron	151	KK940	Women's Training T-Shirt	162
KK185	Sportsman Shirt	174	KK515	Bar Apron	152	KK942	3/4 Length Legging	186
KK186	Sebring Shirt	203	KK516	Estoril T-Shirt	204	KK943	Full Length Legging	186
KK187	Tailored Fit Premium Oxford Shirt short sleeve	20	KK517	Bib Apron	154	KK944	Contrast Full Length Legging	188
KK188	Tailored Fit Premium Oxford Shirt long sleeve	20	KK518	Bib Apron with pocket	154	KK954	Men's Corporate Soft Shell Jacket	120
KK189	Men's Contrast Premium Oxford Shirt	18	KK603	Slim Fit Team Style Polo Shirt	97	KK955	Monza Jacket	206
KK190	Men's Contrast Premium Oxford Shirt button down collar	16	KK606	Men's St. Mellion Polo Shirt	102	KK957	GT Soft Shell Jacket	207
KK191	Slim Fit Business Shirt short sleeve	48	KK611	Monaco Polo Shirt	205	KK958	P1 Micro Fleece Jacket	208
KK192	Slim Fit Business Shirt long sleeve	48	KK615	Oak hill Polo Shirt	107	KK959	Clubman Hooded Fleece	209
KK213	Women's Slim Fit Classic Polo Shirt	86	KK617	Scottsdale Polo Shirt	108	KK961	Women's Track Pant	196
KK241	Women's Poplin Shirt short sleeve	8	KK619	Slim Fit Club Style Polo Shirt	109	KK963	Women's Sports Vest	158
KK242	Women's Poplin Shirt long sleeve	10	KK701	Women's Corporate Oxford Shirt short sleeve	24	KK965	Women's Racer Back Vest	160
KK252	Merino Blend Sweater	74	KK702	Women's Corporate Oxford Shirt long sleeve	26	KK966	Women's short sleeve T-Shirt	164
KK260	Women's Mandarin Collar Shirt short sleeve	60	KK703	Women's Classic Polo Shirt	90	KK969	V Neck Team Top	166
KK261	Women's Mandarin Collar Shirt long sleeve	62	KK705	Kate Comfortec® Polo Shirt	110	KK971	Slim Fit Track Pant	190
KK302	Klassic Sweatshirt	116	KK706	Women's St. Mellion Polo Shirt	102	KK972	Champion Polo Shirt	172
KK303	Klassic Hooded Zipped Jacket	118	KK710	Women's Corporate Oxford Shirt 3/4 sleeve	28	KK973	Men's Sports Vest	158
KK306	Knitted Fleece	119	KK713	Women's Pinstripe Shirt	64	KK974	Riviera Polo Shirt	173
KK315	Women's Premium Non Iron Corporate Shirt short sleeve	38	KK715	Continental Blouse 3/4 sleeve	68	KK976	Action T-Shirt	167
KK316	Women's Premium Non Iron Corporate Shirt long sleeve	40	KK719	Women's Corporate Oxford Shirt with pocket	29	KK979	Warmtex® Base Layer long sleeve	176
KK350	Men's Workwear Oxford Shirt short sleeve	30	KK727	Continental Blouse cap sleeve	69	KK980	Track Short	182
KK351	Men's Workwear Oxford Shirt long sleeve	32	KK728	Women's Workforce Shirt short sleeve	56	KK981	Sports Short	184
KK352	Men's Arundel V Neck Sweater	72	KK729	Women's Workforce Shirt long sleeve	58	KK985	Men's Track Pant	196
KK353	Women's Arundel V Neck Sweater	72	KK730	Sleeveless Polo Shirt	168	KK985K	Kids Track Pant	196
KK354	Women's Arundel V Neck Cardigan	80	KK732	Sophia V Neck Comfortec® Polo Shirt	111	KK986	Training Short	183
KK355	Women's Arundel Crew Neck Cardigan	81	KK735	Women's Bar Shirt short sleeve	136	KK987	Training Pant	194
KK356	Men's Arundel Knitted Polo	78	KK736	Women's Mandarin Collar Bar Shirt short sleeve	142	KK991	Men's short sleeve T-Shirt	164
KK357	Men's Heavyweight Arundel Sweater	76	KK738	Women's Bar Shirt long sleeve	138			





KUSTOM KIT®

CLAYTON
& FORD
BY
KUSTOM KIT

KUSTOM KIT.
bargear

GAMEGEAR®

GAMEGEAR.
FORMULA
RACING

www.kustomkit.com

Kustom Kit®, Bargear®, Gamegear®, Formula Racing®, Cooltex® and Warmtex® are registered trade marks of Charterhouse Holdings Plc.
Lycra® is a registered trade mark of Invista. Teflon® is a registered trade mark of DuPont.