

POLO REGULAR MAN

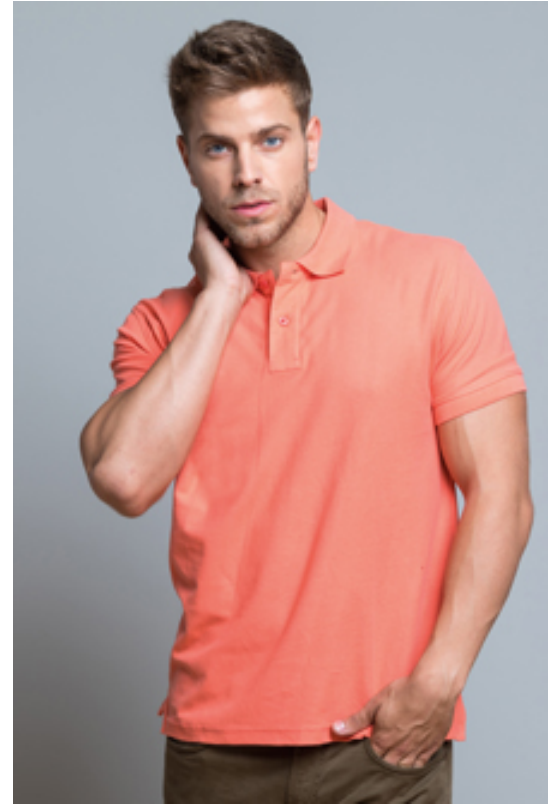
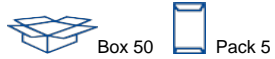
PORA210

Men's short-sleeve piqué polo shirt. 100% preshrunk combed cotton. Ideal for embroidery.

Details:

- Piqué fabric.
- Two-button placket with bottom box-stitch reinforcement.
- 1x1 rib on collar and cuffs.
- Side vents.
- 210 g/m²
- 100% Preshrunk Combed Cotton
- GM - 85% Cotton / 15% Viscose
- AS - 98% Cotton / 2% Viscose

100% preshrunk combed cotton. Weight: 210 g/m². (Pg. 30 catalog)



EU	XS	S	M	L	XL	XXL	XXXL
Width	48 cm 18.9"	52 cm 20.5"	54 cm 21.3"	56 cm 22"	60 cm 23.6"	64 cm 25.2"	66 cm 26"
Length	68 cm 26.8"	70 cm 27.6"	72 cm 28.3"	74 cm 29.1"	76 cm 29.9"	82 cm 32.3"	84 cm 33.1"

COLOURS



NEW COLORS

