



## The oversized women's crew neck sweatshirt

Oversized

S &gt; L

300 GSM

### Details

- Set-in sleeves
- Dropped shoulders
- 1X1 ribs at collar, sleeves hems and bottom hem
- 2 needles topstitches on all seams
- Inside gros grain back neck tape
- Self fabric halfmoon at back neck

### Composition

Shell - Brushed  
 100% Cotton - Organic Ring Spun Combed - 300 GSM  
 Fabric washed

### Care

Wash similar colours together, no ironing on print, wash and iron inside out.



### Country of origin

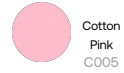
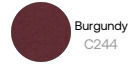
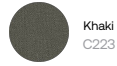
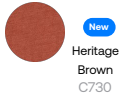
Weaving : Bangladesh  
 Dyeing : Bangladesh  
 Assembly : Bangladesh



Whites



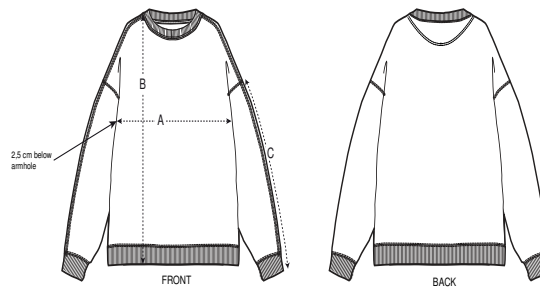
Colors



Essential Heathers



Size Guide



Sizes		S	M	L
A	Half Chest	57.5	63.5	69.5
B	Body Length	70	73	76
C	Sleeve Length	54	57	60

Packing

Sizes		S	M	L
	Pieces/bag	5	5	5
	Pieces/box	20	20	20