



PWI13

B&C ID.001 LSL /women

Piqué

B&C
BE INSPIRED

Composition

B&C, now sourcing 100% more sustainable fibres

100% pre-shrunk ring-spun cotton, combed (investing in Better Cotton*)

**By buying this product from B&C you're supporting responsible cotton production through Better Cotton*

Size

XS, S, M, L, XL, 2XL, 3XL

Packing

10 pcs/pack & 50 pcs/carton

Weight

180 g/m²

Color Note

Heather Grey: 90% pre-shrunk ring-spuncotton /10% viscose

Details

B&C, now sourcing 100% more sustainable fibres

Basic by B&C - The 100% cotton piqué long-sleeved polo shirt designed and engineered to offer the right style at the right price for large quantities.

Designed to complement the B&C ID.001 LSL basic poloshirt, the B&C ID.001 LSL /women has a classic feminine cut, available in 7 sizes to flatter every silhouette. Its typical 1×1 rib knit collar, 2-button reinforced placket and 8 matching colours with the B&C ID.001 LSL unisex style create the perfect basic long-sleeved poloshirt duo.

For the Perfect Duo, pair it with the B&C ID.001 LSL /men

Long-sleeved Piqué polo shirt for women:

- 1×1 rib knitted collar
- Necktape for better shape retention
- 2-button placket reinforced with fusible interlining
- Feminine cut, regular fit
- Side seams for perfect fit
- Wide range of sizes to fit everyone: XS-3XL



DUO
CONCEPT

Want the same style for everyone?

Try the B&C ID.001 LSL

Sustainability



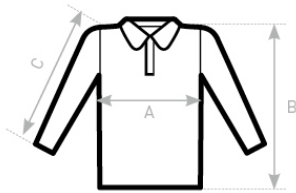
Care instructions



All our products are tested and approved using all main print techniques.

View on the website



Colors**Size Guide**

B&C ID.001 LSL /WOMEN PW I13	XS	S	M	L	XL	2XL	3XL
A HALF CHEST	41	44	47	50	53	56	59
B BODY LENGTH FROM NECK POINT	62	63,5	65	66,5	68	69,5	71
C SLEEVE LENGTH	58	59	60	61	62	63	64

View on the website

