



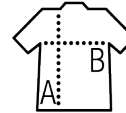
SHORT SLEEVE OXFORD MEN'S SHIRT

Quality

OXFORD - 70% cotton - 30% polyester
Weight: 135 gsm colour, 130 gsm white

Style

Straight cut
Short sleeves
2 button collar
7 tone-on-tone button placket
Left chest pocket
2 side pleats at back



| Sizes | S | M | L | XL | XXL | 3XL | 4XL |
|-------|-------|-------|-------|-------|-------|-------|-------|
| A/B | 77/56 | 78/60 | 79/64 | 80/68 | 81/72 | 82/76 | 83/80 |



| Sizes | S | M | L | XL | XXL | 3XL | 4XL |
|-------|-------|-------|-------|-------|-------|-------|-------|
| cm | 37-38 | 39-40 | 41-42 | 43-44 | 45-46 | 47-48 | 49-50 |

PACKAGING



1



20

Carton size : 55 x 36 x 17 cm
Weight per carton : 6,7 kg

CHARACTERISTICS



White



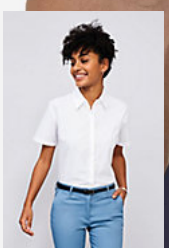
Sky blue



Black



Silver



SOL'S ELITE
16030



page
91