



## The Women's Denim Shirt

Medium Fit

XS > XXL

235 GSM

### Details

- Point collar with single needle topstiches
- Collar stand with one contrast button
- Front placket with single needle topstiches on each side
- Forwarded shoulder
- Back yoke
- Inside yoke in self fabric
- Set-in sleeves
- Sleeve placket with one button
- Cuff with two buttons
- Straight cuff corners
- Double pleats at cuff seam
- Faded look on all seams due to garment washing
- Indigo yarn dyed product, each garment may vary in appearance, colour may bleed, follow our care label
- Read carefully print recommendations

### Composition

Shell - Woven denim  
 100% Cotton - Organic Ring Spun Combed - , 235.0 GSM  
 Garment dyed

### Care

Wash similar colours together, no ironing on print, wash and iron inside out.



### Country of origin

Weaving : Bangladesh  
 Dyeing : Bangladesh  
 Assembly : Bangladesh



Organic  
 Certified by Control Union  
 CU 819434



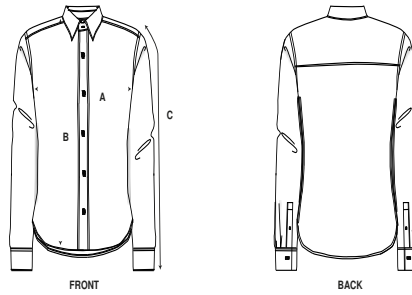
2012163  
 Centexbel  
[www.oeko-tex.com](http://www.oeko-tex.com)



Colors



Size Guide



| Sizes |               | XS   | S    | M    | L    | XL   | XXL  |
|-------|---------------|------|------|------|------|------|------|
| A     | Half Chest    | 47   | 50   | 53   | 56   | 59   | 62   |
| B     | Body Length   | 64.8 | 66.5 | 68.5 | 70.5 | 72.5 | 74.5 |
| C     | Sleeve Length | 58.5 | 59   | 60   | 61   | 62   | 63   |

Packing

| Sizes |            | XS | S  | M  | L  | XL | XXL |
|-------|------------|----|----|----|----|----|-----|
|       | Pieces/bag | 1  | 1  | 1  | 1  | 1  | 1   |
|       | Pieces/box | 25 | 25 | 25 | 25 | 25 | 25  |