



TU07T

# B&C #E190 LSL

Single jersey



### Composition

B&C, now sourcing 100% more sustainable fibres

100% pre-shrunk ring-spun cotton (investing in Better Cotton\*)

*\*By buying this product from B&C you're supporting responsible cotton production through Better Cotton.*

### Size

S, M, L, XL, 2XL, 3XL, 4XL\*

### Packing

10 pcs/pack & 50 pcs/carton

### Weight

185 g/m<sup>2</sup>

### Color Note

Sport Grey: 85% pre-shrunk ring-spun cotton- 15% Viscose

\*Colours available in 4XL

### Details

B&C, now sourcing 100% more sustainable fibres

Your #190bestchoice #longsleeves #tshirt #unisex

The B&C #E190 LSL T-shirt is modern, tubular, long sleeves. It features a contemporary look and the legendary qualitative 190GSM single jersey offered by B&C for more than 20 years now. This T-shirt is one of the 10 styles in the B&C #E line. This line offers softness, comfort and #premium printing surface. Choosing this line you will get: great #contemporaryfit in an #amazing palette of #55 colours, all in duo.

For the perfect DUO, pair it with the B&C #E190 LSL /women

### #Style / Fit

- Mainstream contemporary fit #allpurposes
- Tubular construction #movement
- Thin collar rib for modern appearance #uptodate
- Back necktape for a clean finish #comfort
- Same 10 colours for men & women #perfectduo
- 7 sizes - S to 4XL #fitsall
- Satin label #ultrasofttouch

### #Quality / Handfeel

- Made of 100% cotton #protectmyskin #Oeko-Tex100
- Resistant fabric and soft handfeel #ring spun
- Unchanged proven B&C quality fabric #20years
- Heavy weight fabric 190 gsm #whatevertheweather



DUO  
CONCEPT

Want the same style for everyone?

**Try the B&C #E190 LSL /women**

### Sustainability



### Care instructions



All our products are tested and approved using all main print techniques.

View on the website



TU07T

# B&C #E190 LSL



## Colors



001  
WHITE



002  
BLACK



003  
NAVY



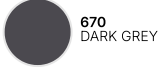
004  
RED



450  
ROYAL BLUE



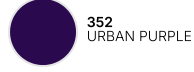
620  
SPORT GREY



670  
DARK GREY



231  
URBAN ORANGE

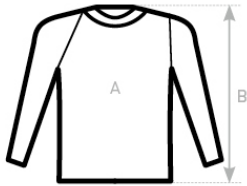


352  
URBAN PURPLE



370  
BURGUNDY

## Size Guide



B&C #E190 LSL TU 07T	XS	S	M	L	XL	2XL	3XL	4XL	5XL
A HALF CHEST	-	50	53	56	59	62	65	70	-
B BODY LENGTH FROM NECK POINT	-	70	72	74	76	78	80	82	-

View on the website

